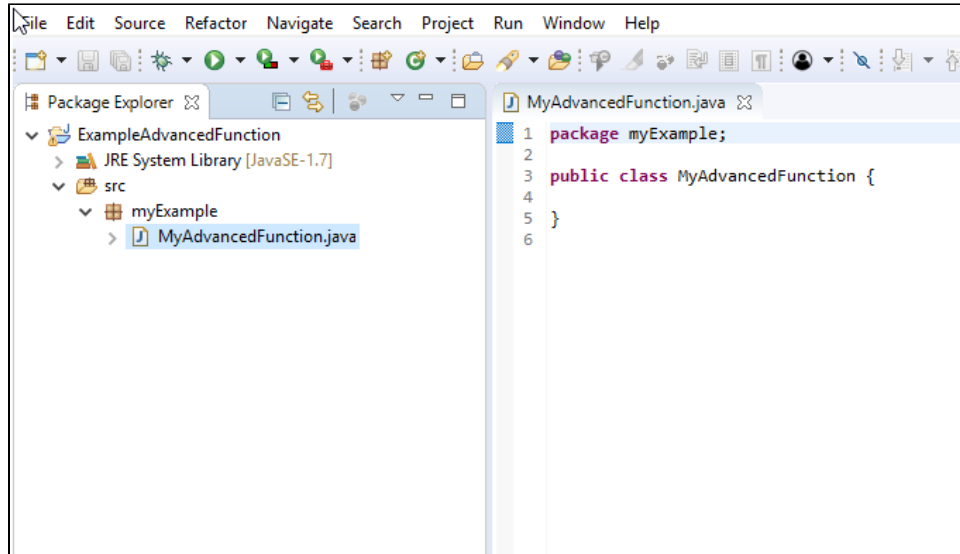


Advanced Function Basics

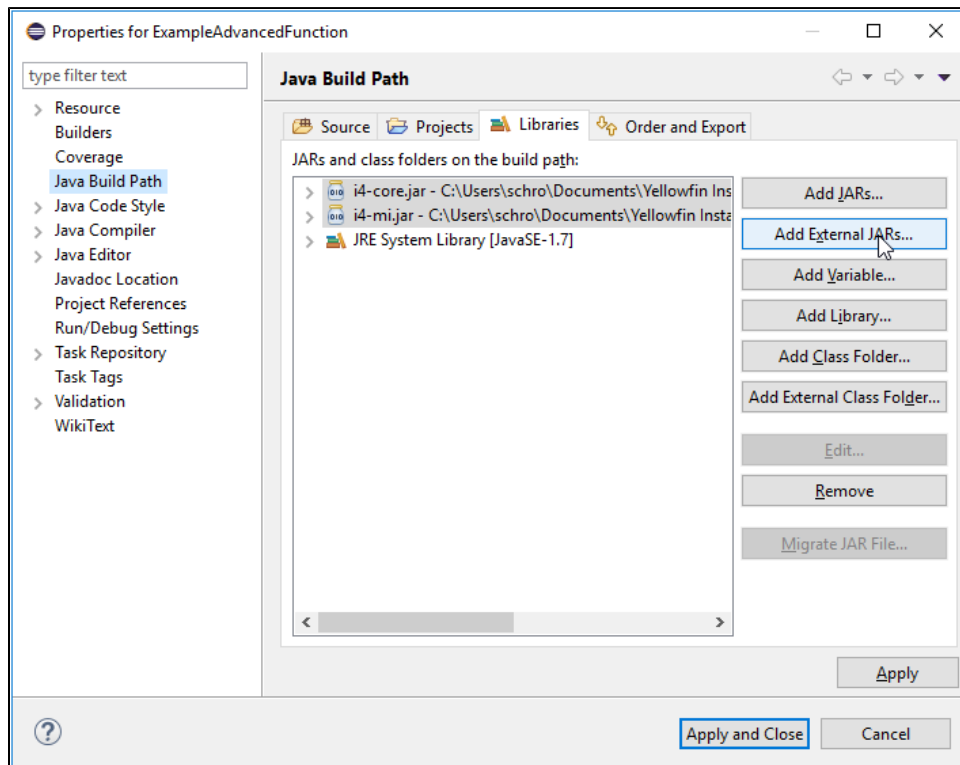
This section depicts a basic process of how an advanced function is created to be used in a Yellowfin report.

Note: Our example uses Eclipse to create an advanced function.

1. Create a new Java project and class.



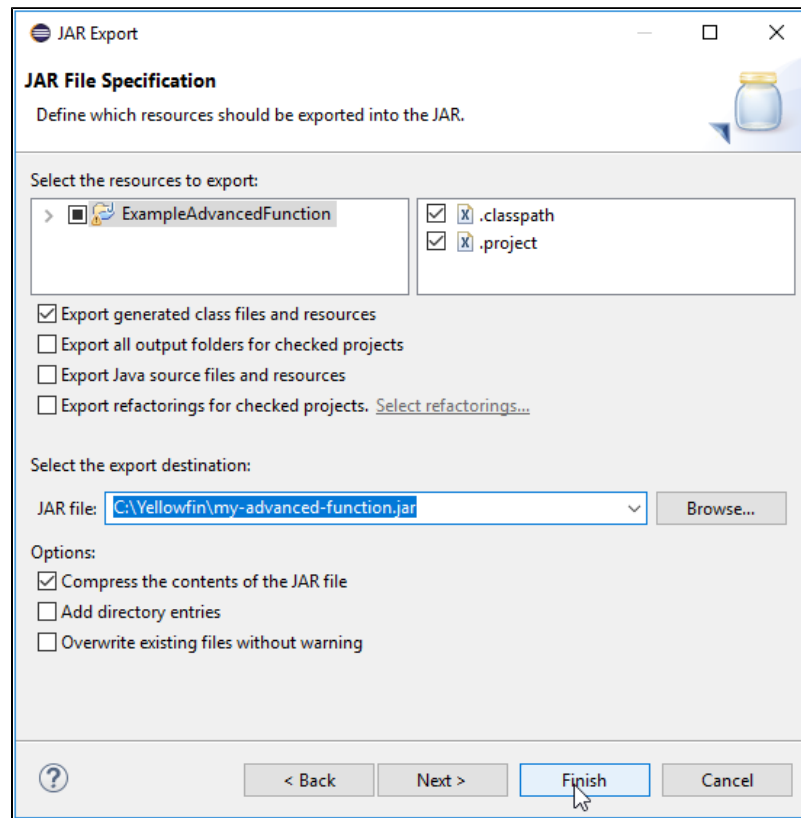
2. Add the required jar files to your build path. In order to compile an advanced function, you will need to include **i4-core.jar** and **i4-mi.jar** files into the build path. These can be found in your `<YellowfinDirectory>\appserver\webapps\ROOT\WEB-INF\lib\` folder.



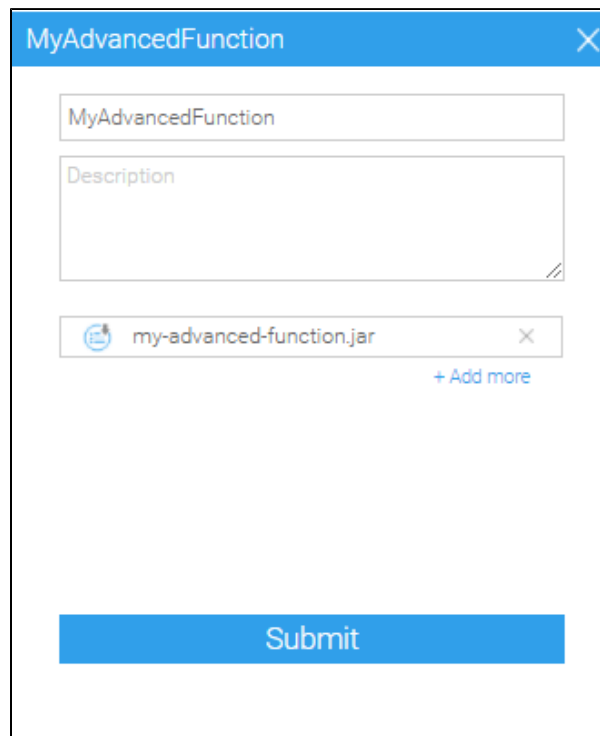
3. Set your class to extend `AnalyticalFunction` and add the unimplemented methods.

[blocked URL](#)

4. Code your advanced function. See example of a basic accumulative total advanced function.
5. Compile this into a jar file. For compatibility purposes, we recommend that you compile this with Java 7 JDK. If your function uses dependent libraries, you will need to place all of the jar files into a single folder, compress it into a .zip format, and then change the extension of that file to .yfp.



6. Load your advanced function through Yellowfin's plug-in manager.



7. Once the advanced function has loaded, it will be immediately available for use in a report.

Advanced Metrics

Advanced Function Data Conversion

Save Cancel

Invoiced Amount (Numeric)

Σ # #! + % -

Display only in charts

Select Function:

Analysis

Grouped Percentage of Total

Multiplication of Columns

My Advanced Function

Natural Logarithm

Null To Zero

Percentage Against Absolute Max

My Advanced Function

Previous topic: [Overview](#)

Next topic: [Advanced function creation](#)