

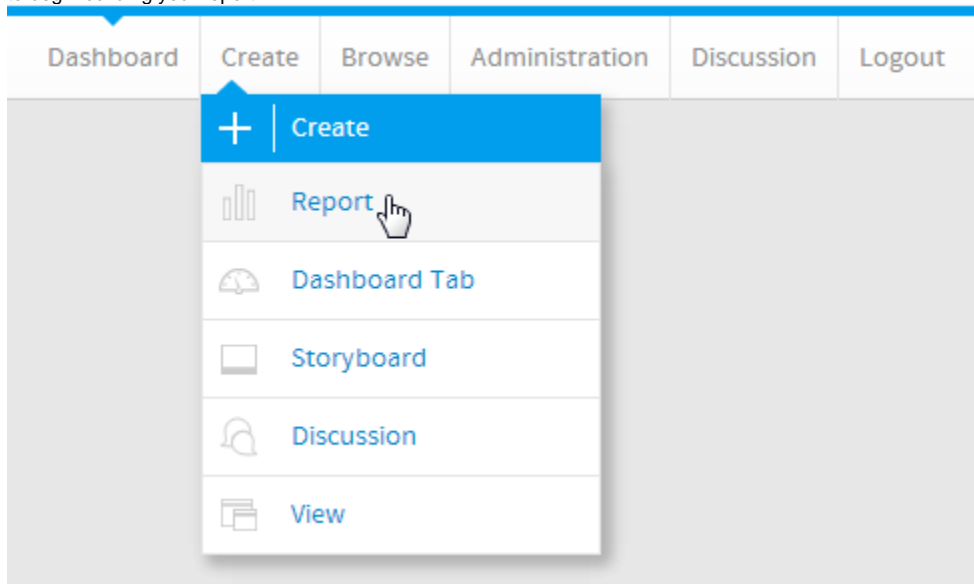
# Spot KPI Report

- [Create Report](#)
- [Data Setup](#)
- [Filter Setup](#)
- [KPI Setup](#)
  - [Spot](#)
  - [KPI Alerts](#)
  - [KPI Refresh Schedule](#)
- [Report Save](#)

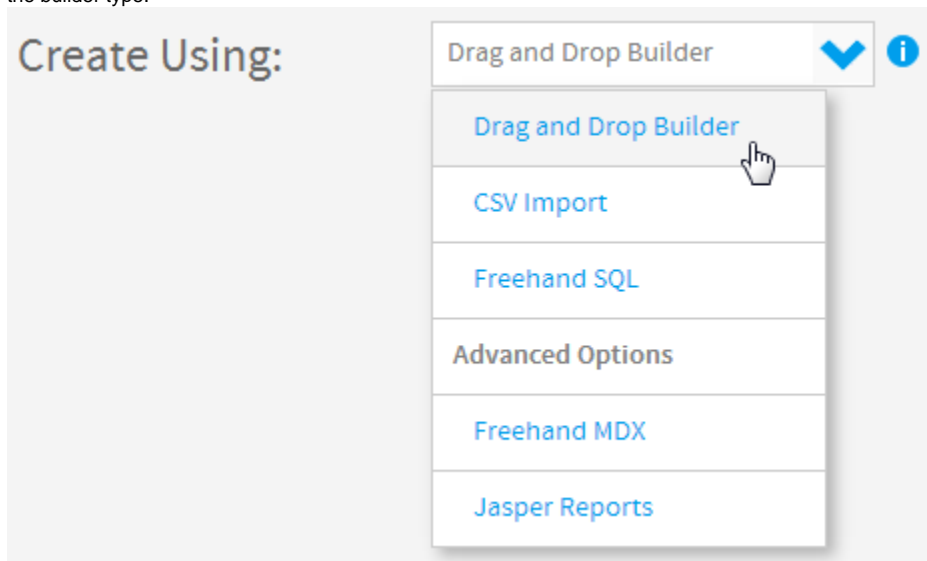
## Create Report

[top](#)

1. Click on the **Create** link and select **Report** to begin building your report.

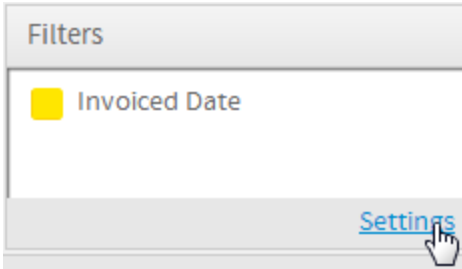


2. You should now be on the Initialisation page. Select the **Drag and Drop Builder** as the builder type.



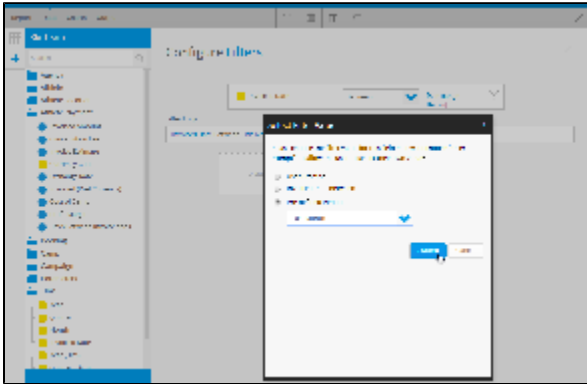
3. Select **Ski Team** as the View. This will now take you to the **Data** step of the builder.





7. Click on the **Define Value** option and make use of the **Pre-Defined Period** option, selecting **Last Month**.

8. Click the **Submit** button.

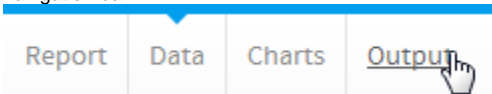


## KPI Setup

[top](#)

You will now need to navigate to the **Output** step of the builder to configure the KPI options.

9. Click the **Output** option in the main navigation bar.



10. Click on the **KPI** menu from the main navigation bar on the **Output** step of the builder.



## Spot

KPI reports require several components to be defined that are not required by standard reports. The metric to be monitored must be configured first.

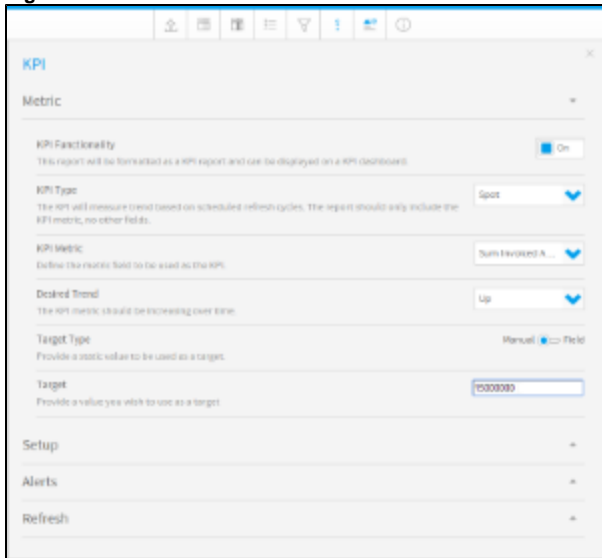
11. To begin, enable the **KPI Functionality** option. This will show all the components required for the KPI.

12. Set the **KPI Type** to **Spot**.

13. Set the **KPI Metric** to **Sum Invoiced Amount**.

14. Set the **Desired Trend** to **Up**.

15. Set the **Target Type** to **Manual** and the **Target** to **15000000**.



The screenshot shows a configuration window for a KPI. The 'Metric' section is expanded, revealing several settings: 'KPI Functionality' is set to 'On'; 'KPI Type' is set to 'Spot'; 'KPI Metric' is set to 'Sum Inverted A...'; 'Desired Trend' is set to 'Up'; 'Target Type' is set to 'Manual'; and the 'Target' value is set to '15000000'. Below the 'Metric' section are three expandable sections: 'Setup', 'Alerts', and 'Refresh'.

## KPI Alerts

The next component required for KPI reports is the Conditional Formatting Alerts displayed to the left of the kpi on the Dashboard. This icon or colour displays an alert for the current status of the value.

16. Click on the **Setup** section to open the settings available.

In this example we will be defining alerts using the icons. You can also use the Cell or Text options if you just wish to display a block of colour rather than an image.

17. Set the **Style** to **Icon** and select the **Ticks** option as the **Icon Set**.

18. Define the **Type** as **Value**. This will mean that the value in the cell is compared to the alert values to check the rule, rather than another field or function.

19. Click on the **Alerts** section to open the alert rules list. This is where you will define the conditions.

20. Create three alerts:

- Red Less than 12000000
- Orange Between 12000000 and 15000000
- Green Greater than 15000000

## KPI Refresh Schedule

21. Click the **Refresh** section to open the scheduling area. In standard reports the refresh schedule is defined in the Save menu, but KPI reports use the KPI menu instead.

22. Set the **Refresh Settings** to be updated **Periodically**.

23. Set the Schedule to be the **First day of each Month**.

24. Close the KPI menu by clicking on the **x** in the top right corner of the menu.

## Report Save

[top](#)

In order to complete the report and activate it the Save menu will need to be completed.

25. Click on the **Report > Save** option through the main navigation bar of the **Output** step.

26. Set the Name to **KPI Spot Report Tutorial**.

27. Type **This report was created as part of the KPI Report tutorial** into the Description box.

28. Set the **Category** to **Tutorial** and the **Sub Category** to **Training**.

29. Click **Activate**.

Report Settings

KPI Spot Report Tutorial

This report was created as part of the KPI Report tutorial

Tutorial Training

+ Add tags

Report Lifespan  
All users with Category access will be able to view this report

Public Private

Display

Refresh

Distribution Security

Activate Draft Cancel

Your KPI report is now complete and ready to be added to a KPI Dashboard Tab.

See [KPI Tabs](#) for more information.

[top](#)