

# Chart Formatting

- [Overview](#)
- [Reset](#)
- [Chart Settings](#)
- [Title](#)
- [Legend](#)
- [Axis](#)
- [Background](#)
- [Labels](#)
- [Series](#)
  - [Series Format](#)
  - [Series](#)
  - [Color](#)
  - [Category](#)
- [GIS Settings](#)
- [Combination Charts](#)

## Overview

The Chart step formatting menu bar provides you with all the formatting options for your chart. You can use these options to change settings such as the legend, background, axis and label.

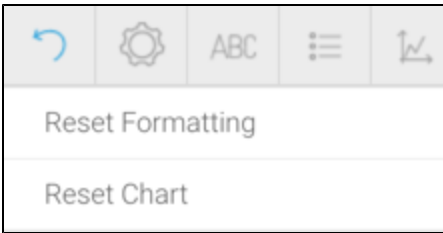


**Note:** the menus and items contained within them will change based on the type of chart you are using.

## Reset

The Reset menu allows you to reset your chart or formatting options:

- **Formatting:** this will reset your formatting selections, but keep the chart type and field selections defined.
- **Chart:** this will reset your chart, including all formatting, field, and chart type selections, returning it to an empty state.



## Chart Settings

[top](#)  
The chart format options are the most dynamic options and are based on the type of chart selected. For example for a pie chart you will be able to set the shadow color and exploding slice options. The common options found in the chart format drop down include interactivity options such as visible series selection.

Chart Settings

×

Size & Position

^

Width

Specify the width (pixels) of the chart as it should display on the report preview page.

Height

Specify the height (pixels) of the chart as it should display on the report preview page.

Chart Position

Specify the position of the chart in relation to the table.

Top

▼

Horizontal Alignment

Specify which edge of the table the chart should be aligned to.

Left

▼

Style

▼

Option	Description
Width	Define the width of the chart in pixels. This option is used instead of resizing the chart using the dragging method.
Height	Define the height of the chart in pixels. This option is used instead of resizing the chart using the dragging method.
Chart Position	Specify the position of the chart in relation to the table.
Horizontal Alignment	Specify which edge of the table the chart should be aligned to.

See [Chart Formatting](#) for more information.

Option	Description
Yearly Comparison	Display multiple years on the x axis of the chart, with one line per series.
Units	Select the granularity of the dates to be displayed. Selecting a unit of finer granularity than your data will result in using the level of your data.

See [Chart Formatting](#) for more information.

Option	Description
Shading	Define whether the area has shading or is a solid color.
Curved	Define whether the corners to the bars/columns will be curved or squared.
Glow	Define whether the bars/columns will have a glow applied.
Shadows	Define whether the bars/columns have a shadow applied.

<b>Color Set</b>	<p>The color applied to this chart will be based the selection made. Possible options are; Metric, Monochrome, Configuration Defaults.</p> <ul style="list-style-type: none"> <li>• <b>Metric:</b> The color applied to this chart will be based the default colors applied to metrics in the view. If no color was defined for a metric, configuration defaults will be used.</li> <li>• <b>Monochrome:</b> The color applied to this chart will be based on different shades of a single selected color.</li> <li>• <b>Configuration Defaults:</b> The color applied to this chart will be based on the defaults defined in configuration.</li> </ul>
<b>Color</b>	This is only available if <b>Monochrome</b> is selected above. Define the color to be used for monochromatic coloring of the chart.
<b>Opacity</b>	Select the opacity percentage of the chart. The lower the percentage, the more transparent it is.
<b>Other Segment</b>	<p>Select the % of total a segment must be smaller than, in order to be grouped into an 'Other' segment in a pie chart. If 0 there is no grouping.</p> <p>If 'Auto' is selected then for pie charts with more than 10 segments, segments with values under 5% will be grouped as 'Other'.</p>
<b>Shadow Color</b>	Define the color of the shadow effect applied to the pie.
<b>Outline Color</b>	Define the color of the outline of the pie and segments.
<b>Outline Width</b>	Define the width of the outline of the pie and segments.
<b>Pie Shading Style</b>	Define the shading style to apply to the pie.
<b>Start Position</b>	<p>Select the position relative to an analogue clock face that the first segment in the pie should start.</p> <p>By default the pie chart will start at the 12 O'Clock position.</p>
<b>Explode Slice</b>	Define which segment(s) of the pie should be split from the main pie.
<b>Depth Factor</b>	Select the percentage of the chart display to be used for the 3D height of the pie.
<b>Keep Circular</b>	Display the pie to fill the full chart area. This means the pie may be stretched so there is no empty space.
<b>Hollow Shapes</b>	Display the line shapes with a solid color centre at each data point, or hollow, depending on the selection.
<b>Curved Lines</b>	Display straight or curved lines between each data point, depending on the selection.
<b>Total Value</b>	Define the total value contained in the proportional infographic image. If left blank the series total will be used. If the series total is less, there will be 'empty color' for the rest of the image. If it is more, everything after the specified value will be ignored.
<b>Empty Color</b>	Define the color to be displayed if the specified Total Value is not met by the selected series.
<b>Orientation</b>	The image used by the proportional infographic will be filled from the top down.
<b>Scale</b>	Display a scale above the comparative infographic that shows the min and max values, and the central point.
<b>Scale Font</b>	Define the formatting for text displayed above the comparative infographic images.
<b>Label Font</b>	Define the formatting for the label text displayed below the comparative infographic images.
<b>Text Font</b>	Define the formatting for text displayed above the comparative infographic images.
<b>Maintain Aspect Ratio</b>	Display the raster map using the same aspect ratio as the original image. This means that it will not be stretched and as such may leave some empty space.
<b>Border Color</b>	Define a color to be used as an outline for each region on the map.
<b>Null Behavior</b>	<p>Define how to treat null or missing values in your chart with continuous time series, to fill in any gaps in time granularity. Time granularity refers to the date or timestamp unit of the chart (millisecond, second, minute, hours, day, week, month, quarter, or year). Options include:</p> <ul style="list-style-type: none"> <li>• <b>Break:</b> The line will simply not be displayed for any missing values, resulting in a visible break in the line chart where there is a time granularity gap.</li> <li>• <b>Skip:</b> The line is joined from the last available value with the next one, over the missing data points. The gaps are not filled in with any additional values, but rather skipped over.</li> <li>• <b>Zero:</b> The null values are treated as zero. This results in filling in the granularity gaps with the value zero. This will alter any calculations included in your data set.</li> </ul> <p><i>Note: This functionality is provided for all variations of line charts that support continuous time series.</i></p>
<b>Fill in Granularity Gaps for Series</b>	Enable or disable the Null Behavior functionality on a continuous time series chart. If enabled, this option fills in the missing values based on the time granularity of the chart.

<b>Fill in Granularity Gaps for Trends</b>	Enable or disable the Null Behavior functionality for trend lines. If enabled, this fills in the missing values in a trend line (for example, when a chart formatting such as a mean or trend is applied) based on the time granularity of the chart.
<b>Limit Treemap Values by Amount</b>	Define whether or not to set a limit on the number of squares generated in a Treemap chart. Users can specify a maximum number of squares; all other values will be summed together in a separate 'Other' square. (Enabled by default.) <i>Note: Ensure that your metric has been included to the size field.</i>
<b>Treemap Limit Amount</b>	Specify how many squares are to be generated by the Treemap chart. (Default value is set to 1,000.)
<b>Limit Treemap Values by Percentage</b>	Define whether or not to set a limit on the Treemap squares based on a specified percentage. Users can specify the percentage to be applied to the field's total; values higher than the specified percentage will be displayed in separate squares, and the remaining (lower) values will be grouped into a single 'Other' square.
<b>Treemap Limit Percentage</b>	Select the percentage with which to limit the Treemap squares.
<b>Link Target Display</b>	If using a link in your chart, choose whether to open the link in a new window, or use the current window.
<b>Initial Display</b>	Choose which style to display a Google map chart in when it is first loaded. Options include Map and Satellite.
<b>Tooltip Display</b>	Choose whether or not to display tooltips on chart.
<b>Text Alignment</b>	For Numeric Display Charts, choose whether to align the text to the left or the right, or stay with the default centre alignment.
<b>Combination Overlay</b>	Allows you to choose how to display bars of different series when you have a Combination chart with a secondary axis. You can choose to display the bars stacked on top of one another when setting is enabled, or side by side when setting is disabled.  <b>Note:</b> this setting will appear for Combination charts with Overlay, such as Horizontal Overlay or Vertical Overlay charts.
<b>Time Series Overlay</b>	Allows you to choose how to display bars or columns of different series in a time series bar or column chart. You can choose to display the bars stacked on top of one another when setting is enabled, or side by side when setting is disabled.
<b>Option</b>	<b>Description</b>
<b>Visible Series Selection</b>	Define whether the user can select which series to display when viewing the report.
<b>Series Selection Style</b>	Only available on Time Series charts, select from different display options for the series selection.
<b>Link Field</b>	Select a field formatted to contain a URL in order to use it as a link on the chart.
<b>Visible Unit Selection</b>	Allow users to change the granularity of the dates to be displayed. Selecting a unit of finer granularity than your data will result in using the level of your data.
<b>Date Slider</b>	Display a date slider on the chart to allow users to adjust the date range of the chart.
<b>Slider Position</b>	Define where the date slider will be displayed on the chart.
<b>Slider Initial Range</b>	Specify the percentage of the available date range the slider is set to when the chart loads.
<b>Bottom Navigation</b>	Display navigation buttons in a bar directly below the map.
<b>Hover Navigation</b>	Display navigation hovered over the top left of the map.
<b>Hover Navigation Color</b>	Select the color of the navigation hovered over the top left of the map.
<b>Option</b>	<b>Description</b>
<b>Latitude</b>	Define the latitude boundaries of the map. This allows you to reduce the area displayed on the map.
<b>Longitude</b>	Define the longitude boundaries of the map. This allows you to reduce the area displayed on the map.
<b>Option</b>	<b>Description</b>
<b>Sunday</b>	Define the color to be applied to the Sunday value row.
<b>Monday</b>	Define the color to be applied to the Monday value row.

<b>Tuesday</b>	Define the color to be applied to the Tuesday value row.
<b>Wednesday</b>	Define the color to be applied to the Wednesday value row.
<b>Thursday</b>	Define the color to be applied to the Thursday value row.
<b>Friday</b>	Define the color to be applied to the Friday value row.
<b>Saturday</b>	Define the color to be applied to the Saturday value row.
Option	Description
<b>Show Median</b>	Enable/disable the display of the median value for each label row.
<b>Show Mean</b>	Enable/disable the display of the mean value for each label row.
Option	Description
<b>Bin Count</b>	Specify the number of bins, or intervals, is based on the number of unique values in the dataset. There are three options available here: <ul style="list-style-type: none"> <li>▪ <b>Auto</b> - the number of bins, or intervals, is automatically calculated by Yellowfin.</li> <li>▪ <b>Values</b> - the number of bins, or intervals, is based on the number of unique values in the data set.</li> <li>▪ <b>Manual</b> - the number of bins, or intervals, is manually defined by the chart creator.</li> </ul>
<b>Count</b>	Define the number of bins, or intervals, to be used for the histogram.  <b>Note:</b> only available when <b>Bin Count</b> is set to <b>Manual</b> .
<b>Show Outliers</b>	Toggle if bins to contain distant outlier values should be included.
Option	Description
<b>Up Color</b>	Define the color to fill the candlestick when displaying an upwards trend value.
<b>Down Color</b>	Define the color to fill the candlestick when displaying a downwards trend value.
<b>Line Color</b>	Define the color to be used for the line or border.
<b>Color</b>	Define the color to be used for the volume columns.
<b>Axis Position</b>	Display the vertical axis of the volume columns on the left or right of the chart.
Option	Description
<b>Summarise Value</b>	Specify if the number should be summarised - shortened to the nearest unit, followed by a unit label.
<b>Decimal Places</b>	Define the number of decimal places to be displayed for the summarised value.
<b>Rounding</b>	Define the rounding you wish to apply to the summarised value.

## Title

The title option allows you to change the title of the chart as well as the style – such as the font settings.

ABC

Title

Text

Title Contents

Display a custom defined chart title.

Custom

Custom Title

Define the text to be used as the chart title.

Style

Use the system default formatting for the chart title text.

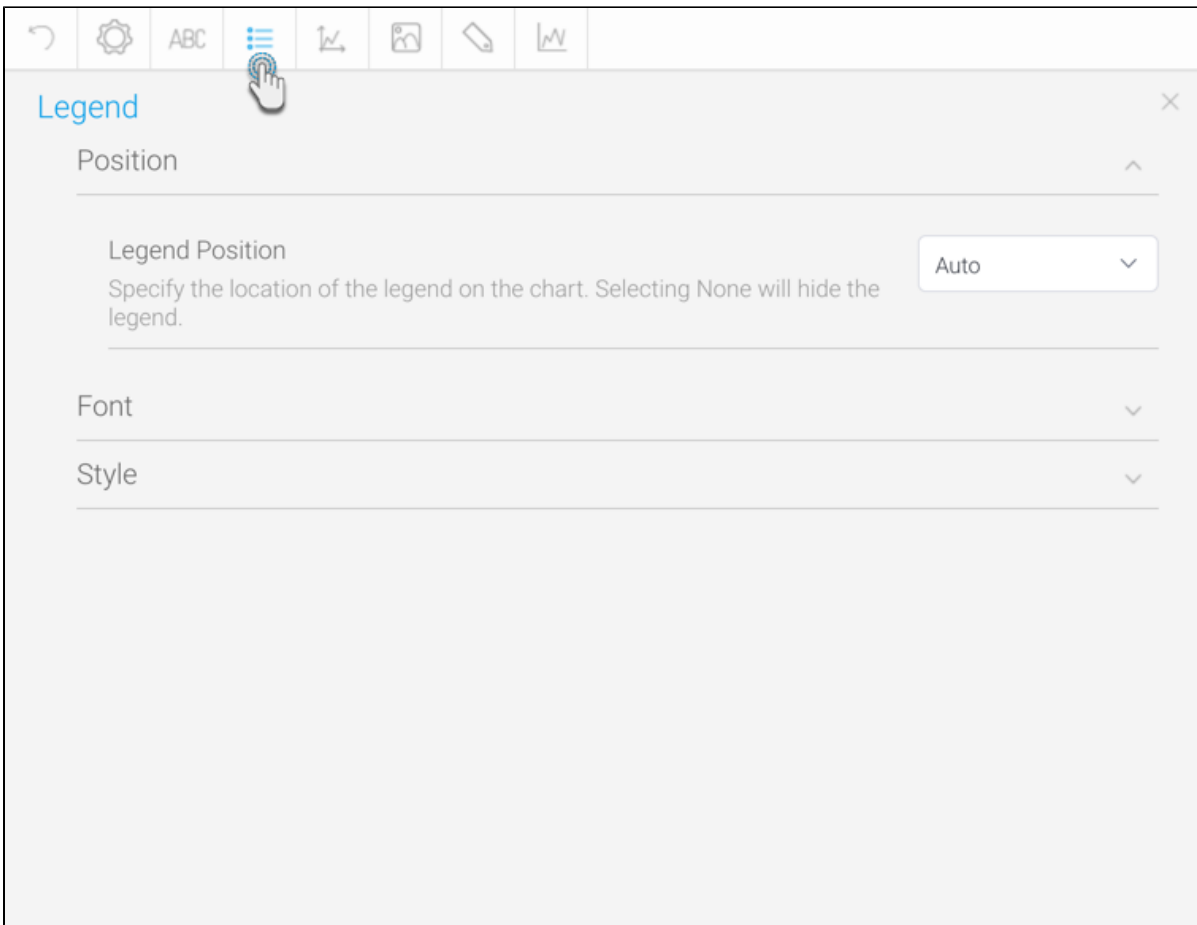
Hide Title

Hide Title from Chart.

Option	Description
Title Contents	<div>Define what should be shown in the Chart Title area.</div> <ul style="list-style-type: none"><li><b>Auto Title:</b> Display a title that is automatically generated based on the fields used in the chart. <i>Note: only available for Auto Charts.</i></li><li><b>Report Name:</b> Display the report name as the title of the chart.</li><li><b>Animation Field:</b> Display the value of the animation field for each frame as the chart title.</li><li><b>Metric:</b> Display the name of the currently selected series as the chart title. <b>Note:</b> the chart has to be a single metric series selection. This means that it can only display one metric at a time. To do this just add one metric to the chart and then enable series selection, rather than adding all metrics and allowing users to toggle multiple at a time.</li><li><b>Custom:</b> Display a custom defined chart title.</li><li><b>None:</b> Hide the chart title.</li></ul>
Custom Title	<div>Display a custom defined chart title.</div>
Style	<div>Use the system default formatting for the chart title text, or customize with your preferred typeface, font size, font decoration, font color and text alignment.</div>
Hide Title	<div>When this toggled is enabled, it will hide the title from the chart. It is the title on top of the chart itself that is hidden.</div> <div>When a chart title is entered, the title can be seen when selecting a chart during creation of dashboard, story, and presentation, regardless whether the title is hidden or not.</div>

## Legend

The Legend is a box that identifies the patterns or colors that are assigned to the data series or categories in a chart. This section of the menu lets you set the following options.



Option	Description
Legend Position	<p>Specify the location of the legend on the chart. Options include:</p> <ul style="list-style-type: none"><li>• <b>Auto:</b> Displays the legend by determining the best location. For a small number of series/values, the legend will appear at the <i>bottom</i> of the chart, but for a large number of series, the legend will appear to the <i>right</i> of the chart. Note that if the chart contains only one series, the legend will not be needed, and therefore will not appear even with this selection. Similarly, the legend will not appear if the chart is too small.</li><li>• <b>None:</b> Hides the legend.</li><li>• <b>Top:</b> Displays the legend at the top of the chart.</li><li>• <b>Bottom:</b> Displays the legend at the bottom of the chart.</li><li>• <b>Left:</b> Displays the legend to the left of the chart.</li><li>• <b>Right:</b> Displays the legend to the right of the chart.</li></ul>
Option	Description
Style	Define the formatting for chart legend text.

Option	Description
Background Color	Define the background color for the legend area of the chart.
Border	Specify the border type for the legend area of the chart.
Conditional	Limit the number of values displayed in the legend area of the chart.
Prefix Field Name	Show or hide the name of the color field (prefix) in the legend.
Auto-hide Legend	Enable this option to automatically hide a legend when it contains too many items. Disable this option to always display a legend with all legend items included.

<b>Set Auto-hide Legend Trigger</b>	Set how many legend items will trigger a legend to auto-hide (eg, setting '20' on a legend with 20 or more items will hide the legend).
<b>Legend Item Shape</b>	Select a shape for the chart's legend items using this drop down. You can choose between the square or circle shapes, or even a line. Default shape selection is <i>circle</i> .  <b>Tip:</b> The 'Default' option will choose a shape based on the selected chart. For example, bar or column charts will have square icons in their legends, whereas line charts or trend items will show lines by default.
<b>Show Trends in Legend</b>	Use this to show or hide trend items in the legend.  <b>Tip:</b> This is a useful feature if you have too many trend items and want to hide them in the legend. The trend lines will still appear in the chart, however.
<b>Variance Field Names</b>	This setting appears when a variance function is used in the color field. When switched on, it shows the names of the two variance values on their respective side of the color range. Disable this toggle to hide the variance names from the sides of the color range.
<b>Color Range Values</b>	Use this toggle to show or hide the numeric values of the color range.

Axis

A line bordering the chart plot area used as a frame of reference for measurement. The y axis is usually the vertical axis and contains data. The x-axis is usually the horizontal axis and contains categories.

Chart Axis

Horizontal

Vertical

Axis Settings - Horizontal

Title

Show/Hide Axis Title

Choose whether to show or hide the axis title. The Auto option uses the chart size to determine whether there is room to display the title.

Auto

Axis Title Text

Write your own custom axis title text or let the chart automatically generate one based on the chart fields.

Auto

Style

Use the system default formatting for axis title text.

Style

Scale

Reference Line

Option	Description
<b>Show/Hide Axis Title</b>	<p>For charts with axes, you can choose whether or not to display a title, or you can leave it up to the system to decide. This option, and the others in this table, applies to whichever axis is selected to the left of the dialog box.</p> <p>Options include:</p> <ul style="list-style-type: none"><li>• <b>Auto:</b> (default selection) The chart size will determine whether there is room to display an axis title. Therefore, a chart with very little room to display a title is less likely to show a title.</li><li>• <b>Show:</b> This option forces the axis title to be displayed regardless of the chart size.</li><li>• <b>Hide:</b> This option hides the axis title, leaving more room for the chart to fill the space.</li></ul>

<b>Axis Title Text</b>	<p>If Show/Hide Axis Title is set to either Auto or Show, this option will be displayed.</p> <p>Options include:</p> <ul style="list-style-type: none"> <li>• <b>Auto:</b> (default selection) This option displays an auto-generated title for the selected axis. Note that if the axis is shared between multiple fields (for example, in two series), an auto title will not be generated.</li> <li>• <b>Custom:</b> This option lets you set your own preferred text for the selected axis. When you select this option from the dropdown, a text field will appear below this option.</li> </ul>
<b>Custom Axis Title Text</b>	This field appears when Axis Title Text is set to Custom. Enter the title text to be displayed for the selected axis.
<b>Style</b>	Define the formatting for axis title text.

The Axis style drop down lets you determine the formats to be applied to axis.

Option	Description
<b>Show Axis</b>	Display the axis on the chart if enabled.
<b>Axis Scale</b>	Choose between linear and logarithmic axis scales, depending on the content of your chart. You can manually set the upper and lower bounds further down the list of options.
<b>Show Tick Marks</b>	Enable this feature to display tick marks on your axis.
<b>Axis Style</b>	Use this option to view axis customization fields. (This will reveal the Color and Thickness settings.)
<b>Color</b>	Define the color of the axis bar.
<b>Thickness</b>	Define the thickness of the axis bar.
<b>Show Arrow</b>	Display an arrow on the end of the axis bar.
<b>Axis Formatting</b>	<p>This configures the formatting of the selected numeric axis. Note that it is only available for metric fields in non-auto charts. Options include:</p> <ul style="list-style-type: none"> <li>• <b>Default:</b> This inherits the axis formatting specified at the configuration level. Note that if either of the other options are selected, the configuration level formatting will be overridden.</li> <li>• <b>Summarize Value:</b> This abbreviates or summarizes the numeric axis labels. For example 100,000,000 will be abbreviated to 100m, making it easier to read.</li> <li>• <b>Column Formatting:</b> This option checks for any formatting already applied to the underlying report column and applies it to the axis.</li> <li>• <b>Custom:</b> This allows users to apply further custom settings on the axis. Enabling this will bring up the Prefix, Suffix, and Decimal Places settings for the axis.</li> </ul>
<b>Margin</b>	Define the spacing between the edges of the axis and the first and last categories.
<b>Abbreviate Label</b>	Label text will be abbreviated to display partial values.
<b>Rotate Axis Label</b>	<p>Specify which angle the axis labels are displayed in relation to the axis bar. This allows you to rotate long labels to display more text.</p> <p>The options available here depend on the chart type selected.</p> <p>The Auto option (if available) is based on chart size: if a chart is small, the Auto option will rotate axis labels to '90 up', making them easier to read.</p>
<b>Category Spacing</b>	Define the size of the spacing between each category grouping on the axis.
<b>Series Spacing</b>	Define the size of the spacing between each series within a category grouping on the axis.
<b>Prefix</b>	Define a prefix to be applied to the values displayed on the axis. This is a character to display before the value, such as \$.
<b>Suffix</b>	Define a suffix to be applied to the values displayed on the axis. This is a character to display after the value, such as %.
<b>Hide Negative Prefix</b>	Select whether negative values should display or hide the '-' negative prefix. If the toggle is enabled, the negative prefix will be hidden.
<b>Decimal Places</b>	Define the number of decimal places to display on the axis label text.
<b>Desired Trend</b>	Display an arrow in the corner of the chart to demonstrate the desired trend.
<b>Axis Location</b>	Specify which side of the chart the axis is displayed on.

<b>Show Tick Labels</b>	Enable this feature to display the labels showing tick values. (This reveals the Label Font option.)
<b>Label Font</b>	Define the font formatting for axis label text.
<b>Secondary Prefix</b>	Define a prefix to be applied to the values displayed on the axis. This is a character to display before the value, such as \$.
<b>Secondary Suffix</b>	Define a suffix to be applied to the values displayed on the axis. This is a character to display after the value, such as %.
<b>Secondary Dec. Places</b>	Define the number of decimal places to display on the axis label text.

The Scale section lets you determine the scale dimensions. Generally you will only be able to set the Y Axis attributes — unless you are using XY charts in which case you can set both X and Y attributes.

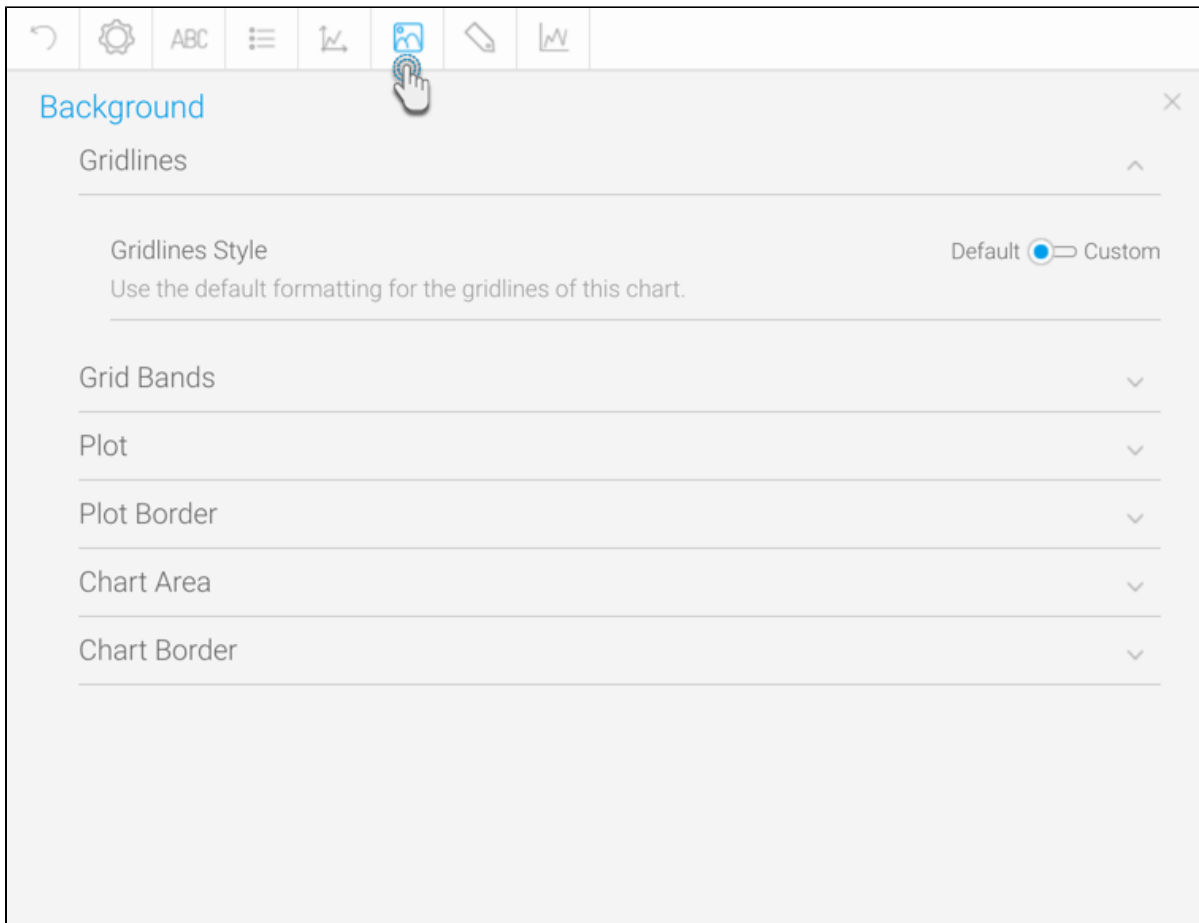
Option	Description
<b>Scale</b>	Define the boundaries of the axis. Choose from Manual (where you set the scale), Automatic (lower bound: 0, or if a negative value exists, the lowest negative value; upper bound: maximum value of range) and Range (lower bound: minimum value of range; upper bound: maximum value of range — note that if the minimum value is below zero, this option would work the same as Automatic).
<b>Lower Bound</b>	This field appears when Scale is set to Manual. Define a custom starting point for the axis.
<b>Upper Bound</b>	This field appears when Scale is set to Manual. Define a custom cut-off point for the axis.
<b>Scale Unit</b>	Define the scale unit for the axis. Labels will be displayed at these increments, or multiples of the unit.

Allows you to add one or more reference lines to a numeric axis. This is a visual line that appears on the chart at a specified position. More than one reference lines can be added by using the Add Item option.

Option	Description
<b>Value</b>	Define the position of the reference line by providing the exact numeric value (relative to the values on the axis).
<b>Color</b>	Specify the color of the reference line by choosing one from the color picker.
<b>Hide Label</b>	If you don't want to display a label on your reference line, use this toggle to hide it.
<b>Label ('Target')</b>	This field is available when the Hide Label toggle is disabled. Type your preferred label for the reference line. By default, this line is labeled 'Target'.
<b>Label font</b>	Specify the typeface for the reference line label.
<b>Label size</b>	Specify the font size of the reference line label.
<b>Label position</b>	Specify the location of the label on the reference line. Options include: <ul style="list-style-type: none"> <li>• <b>Default:</b> Same as the left position.</li> <li>• <b>Left:</b> Appears on the left side (if horizontal), or top (if vertical) of the reference line.</li> <li>• <b>Center:</b> Appears on the center of the line.</li> <li>• <b>Right:</b> Appears on the right side (if horizontal), or bottom (if vertical) of the line.</li> </ul>
<b>Add item</b>	Use this option to define another reference line on the chart.

## Background

The Background options let you set the style and color of the main chart elements such as the plot and chart areas. You can apply elements such as background images and or gridlines.



Option	Description
<b>Gridlines Style</b>	Keep the default gridline style based on the chart, or define a custom style. The default for charts with numeric fields is Numeric Axes, which displays gridlines only for axes that are numeric in nature, or None which displays no gridlines if the chart does not contain numeric fields. The following fields will be displayed if you choose Custom.
<b>Show Gridlines</b>	Choose which axis to display gridlines for. Options include: <ul style="list-style-type: none"><li>• <b>Numeric Axes:</b> Displays gridlines for axes of only numeric fields. Axes of dimension fields will not show gridlines.</li><li>• <b>Horizontal Axis:</b> Displays gridlines for only the horizontal axis.</li><li>• <b>Vertical Axis:</b> Displays gridlines for only the vertical axis.</li><li>• <b>All Axes:</b> Displays gridlines for all axes.</li><li>• <b>None:</b> Does not display any gridlines.</li></ul>
<b>Horizontal Gridline Color</b>	Specify the color for the horizontal gridline.
<b>Vertical Gridline Color</b>	Specify the color for the vertical gridline.

Gridline options are available for all category charts, bubble and scatter charts.

Option	Description
<b>Band Color</b>	Define the color to be used for grid band shading on the chart.
<b>Band Opacity</b>	Select the opacity percentage of the grid band shading on the chart. The lower the percentage, the more transparent it is.

The plot area is the area bounded by the axes, including all data series. The drop down options let you set the background colors applied to the plot area.

Option	Description
<b>Style</b>	Specify the background shading style for the plot.
<b>Direction</b>	Specify the gradient shading style for the plot background color.
<b>Color</b>	Specify the color(s) to be used in the plot background.
<b>Image</b>	Select an image to use for the plot background.
<b>Image Opacity</b>	Select the opacity percentage of the plot background image. The lower the percentage, the more transparent it is.

The plot area is the area bounded by the axes, including all data series. The drop down options let you set the background colors applied to the plot area.

Option	Description
<b>Style</b>	Define the border style for the plot.
<b>Color</b>	Define the color of the border for the plot.
<b>Width</b>	Define the width of the border for the plot.

The entire chart and all its elements are described as the chart area. The drop down options let you set the background colors applied to the chart area.

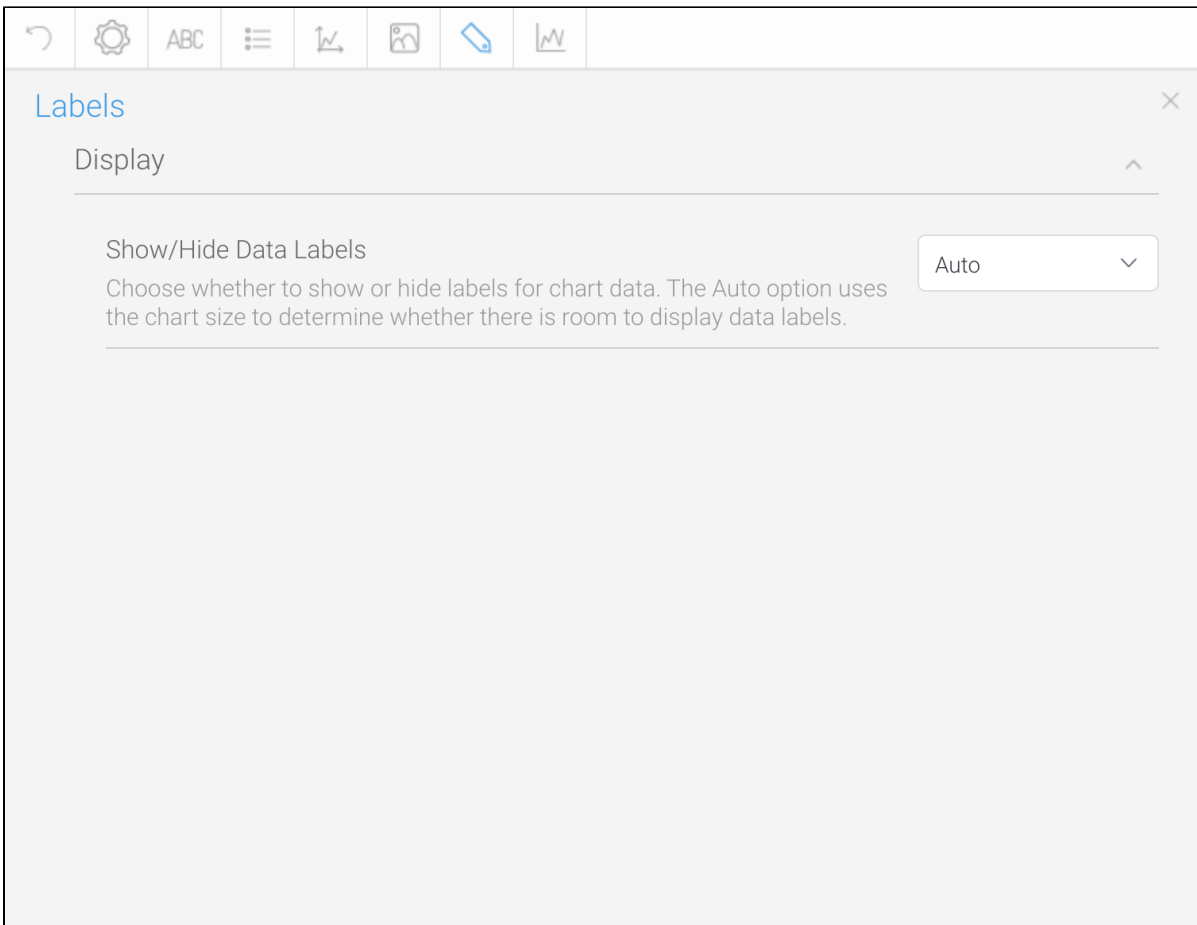
Option	Description
<b>Style</b>	Specify the background shading style for the chart.
<b>Direction</b>	Specify the gradient shading style for the chart background color.
<b>Color</b>	Specify the color(s) to be used in the chart background.
<b>Image</b>	Select an image to use for the chart background.
<b>Image Opacity</b>	Select the opacity percentage of the chart background image. The lower the percentage, the more transparent it is.

The entire chart and all its elements are described as the chart area. The drop down options let you set the background colors applied to the chart area.

Option	Description
<b>Style</b>	Define the border style for the chart.
<b>Color</b>	Define the color of the border for the chart.
<b>Width</b>	Define the width of the border for the chart.

## Labels

Labels can be added to charts to print out the values of the data point onto the chart in text format. Charts that support labels include line, pie, bar charts, and more. **Note:** These settings will differ according to the selected chart type.



Option	Description
Show/Hide Data Labels	<p>Show or hide labels for values on the chart. Options include:</p> <ul style="list-style-type: none"><li>• <b>Auto:</b> (Default selection) Display the labels automatically where appropriate for each value on the chart. For charts, such as pie, they disappear if the chart size is too small.</li><li>• <b>Show:</b> Display the labels for each value on the chart. The rest of the label settings (discussed below) will only appear when this option is selected.</li><li>• <b>Hide:</b> Hide the labels for each value on the chart.</li></ul>
Label Contents	<p>Specify the contents of the label, if applicable.</p> <ul style="list-style-type: none"><li>• <b>Category:</b> this is the dimension value.</li><li>• <b>Value:</b> this is the metric value.</li><li>• <b>Percentage:</b> this is the % of total for the metric value.</li></ul>
Label Field	<p>If your chart type could display a label on different fields, use this dropdown to choose the label field.</p>
Style	<p>Define the formatting for chart labels.</p>
Label Font	<p>Define the custom font formatting for the label contents.</p>
Match label color with series color	<p>Choose whether the label will inherit the series line color to which it is related.</p> <p>This applies only to line chart types.</p>
Hide Label Lines	<p>Display or hide the lines connecting the chart to each label.</p>

<b>Align Value Label</b>	<p>Choose the position of value labels. Options include:</p> <ul style="list-style-type: none"><li>• <b>Centered:</b> Displays the value label in the center of the bar.</li><li>• <b>Axis aligned:</b> The value label is position according to the axis.</li><li>• <b>Above:</b> The value label is displayed outside the bar.</li></ul> <p><i>Note: This setting is specific to bar charts.</i></p>
<b>Rotate Value Label</b>	<p>Specify the angle the value labels are displayed, in relation to the axis.</p> <p><i>Note: This setting is specific to bar charts.</i></p>
<b>Show Long Labels</b>	<p>If enabled, labels that do not fit a horizontal bar will be moved to the end of the bar. If disabled, the labels that do not fit, will not be displayed at all.</p> <p>Ensure that the time series functionality is disabled for this to work.</p> <p><i>Note: This setting is specific to bar charts.</i></p>
<b>Overlapping Labels</b>	<p>Specify how labels that overlap other labels or data points are displayed. Choose to hide them or show the overlapping labels anyway.</p> <p><i>Note: This setting is specific to line charts.</i></p>

Option	Description
<b>Style</b>	Specify the background shading style for the label.
<b>Direction</b>	Specify the gradient shading style for the label background color.
<b>Color</b>	Specify the color(s) to be used in the label background.
<b>Shadow Color</b>	Select the color to be used as the shadow effect on the chart labels.
<b>Border</b>	Define the border style for the label.
<b>Border Color</b>	Define the color of the border for the labels of the chart.
<b>Border Width</b>	Define the width of the border for the labels of the chart.

## Series

Chart Series

Series Format

+ Add Series

+ Populate Series

Series

Sum Invoiced Amount

Color

Agency Demographic

Category

Year

Series Settings

Please select a field from the list on the left.

### Series Format

To update the formatting of a selected, individual value in a series (i.e. a singular value of the dimension field). Ensure to select a non auto chart to format the series.

This includes the following buttons on the left-side panel:

- **+Add Series** - This button is used to format a series existing in the data set of the selected dimension color field. Note that it does not create a new series; the series specified here should match a value in the selected field. Click on this button, and provide the series formatting details.
- **+Populate Series** - This button is used to retrieve all the series values from the selected dimension field, and add them to this column. You can then select each one and format them.

Option	Description
Series Format	Name of the selected value of the series. It should match a data value from the data field for these settings to apply.
Style	Choose if a style should be specified for the series value. Options include: <ul style="list-style-type: none"><li>• <b>Default:</b> Select this to apply the default settings to the selected series value.</li><li>• <b>Solid:</b> Select this to specify a custom solid color for the selected value.</li><li>• <b>Gradient:</b> Choose this to specify custom gradient colors for the selected value.</li></ul>
Custom Color	Specify if a custom color should be applied only to this value.
Direction	Choose the direction the gradient should follow. (This only applies to gradient styling.)
Color	The color to be applied to the selected value. In case of gradient, choose the inner and outer colors.
Shapes	Define whether line shapes are on, off, or system default.
Thickness	Define the width of the line in pixels.
Line Style	Define the style of the series line as solid, dashed, or dotted.

Customize the border of the selected value. This refers to the data value represented in the charts, and the legend.

Option	Description
Color	Customize the border color.
Width	Choose the border width. Select from thin, medium, and thick.

Chart Series

Series Format

Adventure

Culture

Family

General

Luxury

Relaxation

Sport

+ Add Series

+ Populate Series

Series

Sum Cancellation Fee

Color

Agency Demographic

Category

Year

Series Settings - Sum Cancellation Fee

Series

Border

Conditional

Display

Display conditional formatting alerts on the chart.

Style

Display the conditional formatting alert as a line on the chart. This will create a line positioned at the lowest value in the alert range.

Position

Position the alert in the background, behind the chart data.



This section only appears if conditional formatting has been applied in the report, and the color field has not been used in the chart builder.

Option	Description
Display	Use this toggle to apply a conditional formatting rule on the chart.

<b>Style</b>	Define how to display the conditional formatting rule on the chart. Options include: <ul style="list-style-type: none"> <li>• <b>Line:</b> displays the rule as a line, which will be positioned at the lowest value in the alert range.</li> <li>• <b>Area:</b> displays the rule as a range on the chart. Creates a block of color for the whole range of the formatting rule.</li> </ul>
<b>Position</b>	Specify how the conditional formatting rule should be positioned. Options include: <ul style="list-style-type: none"> <li>• <b>Background:</b> displays the rule behind the chart data.</li> <li>• <b>Foreground:</b> displays the rule in front of the chart data.</li> </ul>

### Series

Option	Description
<b>Style</b>	Specify the shading style for the series.
<b>Opacity</b>	Allows you to specify the opacity level of the series in percentage. The lower the percentage, the more transparent the series will be. The default value selection is Auto, which automatically adjusts the setting based on the chart type.
<b>Aggregation Label</b>	This allows you to toggle the display of a label in front of the field name, based on the chart level aggregation applied.
<b>Tooltip Formatting</b>	This allows you to display field formatting applied at the report level on tooltips. This will ignore all chart level formatting.  For example, if in the report data, the field has been formatted to include a % suffix, enabling this will display the suffix in the chart tooltip.
<b>Direction</b>	Select the direction of the gradient shading to be applied to the series.
<b>Color</b>	Define the color(s) to be applied to the series.
<b>Combination Sub Chart</b>	Specify which sub chart this series belongs to. This will define the type of chart, and which vertical axis it will use.
<b>Shapes</b>	Define whether line shapes are on, off, or system default.
<b>Start Column Style</b>	Select a style for the start column of a waterfall chart: <ul style="list-style-type: none"> <li>• <b>Default:</b> apply the default system color to the start column.</li> <li>• <b>Solid:</b> apply a custom solid color to the start column.</li> </ul>
<b>Start Column Color</b>	Select a custom color for the start column of a waterfall chart.
<b>Start Column Title Text</b>	Toggle the use of custom text for the start column title of a waterfall chart. The text is also displayed on the chart axis and tooltip.
<b>Custom Start Column Title Text</b>	Customize the start column title text of a waterfall chart.
<b>Thickness</b>	Define the width of the line in pixels.

Option	Description
<b>Color</b>	Define a color for the outline of the series.
<b>Width</b>	Define the width of the outline of the series.

Option	Description
<b>Style</b>	Define the color set and bounds to be applied to the series.



## Color

Option	Description
<b>Ordering</b>	<p>Specify how to display the legend values. Options include:</p> <ul style="list-style-type: none"><li>• <b>Alphanumeric:</b> displays the legend values alphanumerically. This means any custom sorting options applied to the field will be ignored.</li><li>• <b>Table:</b> displays the legend values according to the output of the table. This means that if a field has custom sorting applied through the use of <a href="#">reference codes</a>, then this sorting order is applied.</li></ul>
<b>Sort Direction</b>	<p>Define the direction in which the values of the chart should be sorted. Options include:</p> <ul style="list-style-type: none"><li>• <b>Ascending:</b> order the values from low to high.</li><li>• <b>Descending:</b> order the values from high to low.</li></ul>

The color applied to the chart will be based on the selection made here.

Option	Description
<b>Reference Code</b>	Yellowfin will check for any <a href="#">custom reference code values</a> set for this series and apply any corresponding color(s) to this chart. If none are found and this option is selected, system default colors will be used instead. If your custom colors don't appear, make sure you have set the <b>Format</b> field to <b>Reference Code</b> in your chart field <a href="#">column formatting settings</a> .
<b>Monochrome</b>	The chart color will be based on different shades of a single selected color.
<b>Color</b>	This is only available if the Monochrome option above is selected . Define the color to be used for monochromatic coloring of the chart.

The following formatting options are applicable for waterfall charts.

Option	Description
<b>Total Column Style</b>	<p>Select a style for the total column of a waterfall chart:</p> <ul style="list-style-type: none"><li>• <b>Default:</b> apply the default system color to the total column.</li><li>• <b>Solid:</b> apply a custom solid color to the total column.</li></ul>
<b>Total Column Color</b>	Select a custom color for the total column of a waterfall chart.
<b>Start Column Title Text</b>	Toggle the use of custom text for the total column title of a waterfall chart. The text is also displayed on the chart axis and tooltip.
<b>Custom Start Column Title Text</b>	Customize the total column title text of a waterfall chart.

## Category

Option	Description
<b>Sort By</b>	<p>Specify how the data in the chart is ordered, from one of these options;</p> <ul style="list-style-type: none"><li>▪ <b>Data Order</b> - order this data based on the order the values appear in the report table.</li><li>▪ <b>Alphanumeric</b> - order this data based on the values in the chart, alphabetically.</li><li>▪ <b>Reference Code</b> - order this data based on the values in the chart, by <a href="#">reference code</a> custom sort order.</li><li>▪ <b>Series</b> - order this data based on the values in the Sort Series field.</li></ul>
<b>Sort Series</b>	Specify which series should be used to order the data in the chart.

<b>Sort Direction</b>	Specify if the data should be sorted in ascending or descending order.
<b>Option</b>	<b>Description</b>
<b>Category Highlight</b>	Specify if certain category values should be highlighted in the chart, changing the color specified by the series.
<b>Highlighted Value</b>	Select the value(s) to be highlighted in the chart, from the list provided.
<b>Highlight Color</b>	Select a color to use as the category highlight.

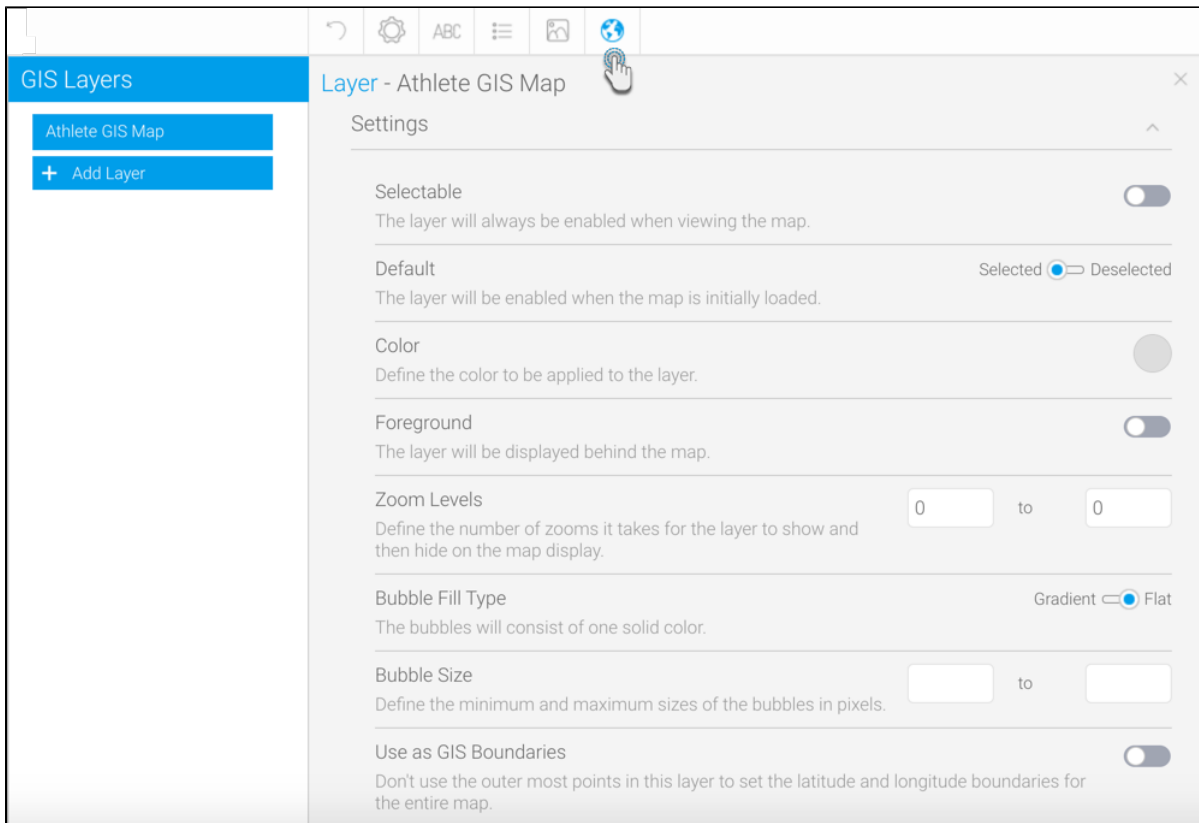
Allows you to remove dimensions/categories from charts, in order to decrease the chart size. This is ideal for situations in which charts contain too many categories, making it difficult to view them properly. This feature allows you to select a specific number of categories to display.

Supported bar types: Bars, areas, line (except Z charts), auto charts (with only a single dimension field).

Note: This does not work for charts with dimension colors.

Option	Description
Trim Values	Use this toggle to enable or disable the functionality to trim dimension fields from charts.
Metric to Trim by	(Mandatory field) The chart dimensions are ranked according to the value of a metric field. This is the field specified here. This ranking is important for the system to determine the top or bottom dimensions in the chart. Note that this does not change the sorting of the chart, which is a separate functionality.
Trim Top or Bottom	Specify whether dimensions on top or bottom are cut from a chart. Options include: <ul style="list-style-type: none"> <li>• <b>Top N:</b> Select this to keep the top dimension fields in the chart, removing all others. Here N denotes the number of fields specified by the user in the following parameter.</li> <li>• <b>Bottom N:</b> Select this to keep the bottom dimension fields in the chart, removing all others. Here N denotes the number of fields specified by the user in the following parameter.</li> </ul>
Dimension Display Count	Specify the number of dimension fields that you wish to display in the chart. The chart will show only this many fields, removing all others.
Metric Value Type	You can choose to ignore the negative sign of all values, so they are treated at positive values when the chart is ranked according to values. Options include: <ul style="list-style-type: none"> <li>• <b>Relative:</b> Use this to treat all negative values as negative. For example, -55,300 will be treated as a negative value and sorted in the bottom of a chart.</li> <li>• <b>Absolute:</b> All negative values will be treated as positive. For example, -55,300 will be treated as a positive value and possibly sorted higher in the chart.</li> </ul>
Show Other Dimension	Enable this toggle to display a total of all other values (after the user specified count) into a separate category on the chart.

## GIS Settings



Option	Description
<b>Selectable</b>	Allow the user to enable and disable the layer when viewing the map.
<b>Default</b>	The layer will be enabled when the map is initially loaded.
<b>Color</b>	Define the color to be applied to the layer.
<b>Foreground</b>	The layer will be displayed in front of the map.
<b>Zoom Levels</b>	Define the number of zooms it takes for the layer to show and then hide on the map display.
<b>Labels</b>	Display the labels for each value in the layer.
<b>Point Size</b>	Define the diameter (pixels) of each point.
<b>Bubble Fill Type</b>	Define the shading effect to be applied to the bubbles.
<b>Latitude</b>	Define the latitude boundaries of the map. This allows you to reduce the area displayed on the map.
<b>Longitude</b>	Define the longitude boundaries of the map. This allows you to reduce the area displayed on the map.
<b>Center Point</b>	Define a center point of your map, by providing the latitude and longitude values (above). This is an alternative option to specify the map boundary, and will not be applied if the boundary is already defined.

## Combination Charts

Combination Charts

Chart 1 (Column)

+ Add Sub chart

Combination Charts - Chart 1

Combination Charts

Chart Type

This sub chart will display as bars in the combination chart.

Column

Secondary Y Axis

This sub chart will use the secondary vertical axis (right) for its scale.

☒

Option	Description
Chart Type	Define the type of display this chart will use.
Secondary Y Axis	Define which vertical axis this chart will use.

[top](#)