

Restricting Data with Access Filters

- [Overview](#)
 - [Configure Reference Types](#)
- [Create an Access Filter](#)
 - [Filter Parameters](#)
- [Manual Access Filters](#)
 - [Settings](#)
 - [User](#)
 - [Value](#)
 - [Records](#)
 - [Usage](#)
- [Report Access Filters](#)
 - [Settings](#)
 - [Report](#)
 - [Records](#)
 - [Usage](#)
- [SQL Query Access Filters](#)
 - [Settings](#)
 - [Records](#)
 - [Usage](#)
- [CSV Access Filters](#)
 - [Settings](#)
 - [Records](#)
 - [Usage](#)
- [Assign to a View](#)
- [Assign to a Report](#)
- [Overriding Access Filters](#)
 - [Enabling the overriding functionality](#)

Overview

[top](#)

Access Filters are used to restrict data based on the user running a report. A manager may only be allowed to see employee details from his or her own department, for example. Access Filters match users within Yellowfin to an arbitrary Reference Id. The Reference Id for the user can then be used as a filter when they run reports.

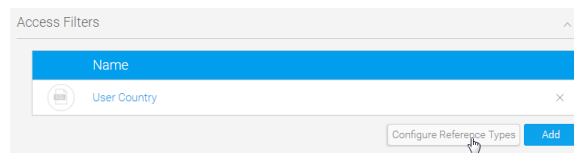
The steps for setting up Access Filters are:

1. Create an Access Filter on the data source
2. Assign the Access Filter to a field on a view
3. Define a default Access Filter on the view
4. Assign an Access Filter to a report

Configure Reference Types

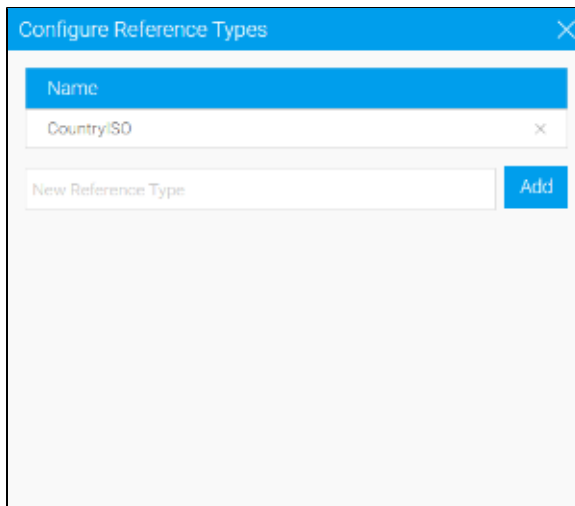
Each source filter that you create needs to be categorised by a reference type. This is used to link the data in your source system with Yellowfin meta-data. It also provides a way to categorise the type of filters that you can make available for your views.

1. Click on the **Configure Reference Types** button at the bottom of the access filter list.



2. Type a name for your reference type and click the **Add** button. Alternatively, click on the **x** next to an existing reference type to delete it.

Note: If you wish to delete a filter type then from the edit popup select a type and click the delete link. You will be prompted to click OK to save your changes. If you delete a type which is in use this may impact your reporting filter process.

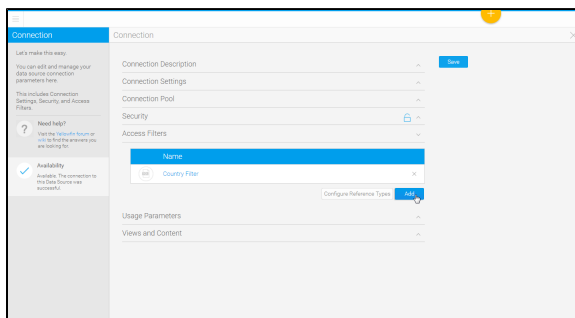


The 'Configure Reference Types' dialog box has a blue header with a close button. It contains a 'Name' field with a dropdown menu currently showing 'CountryISO'. Below this is a 'New Reference Type' input field and an 'Add' button.

Create an Access Filter

[top](#)

1. Open the Access Filters section on the connection details page.
2. Click the **Add** button in order to create a new **Access Filter**.

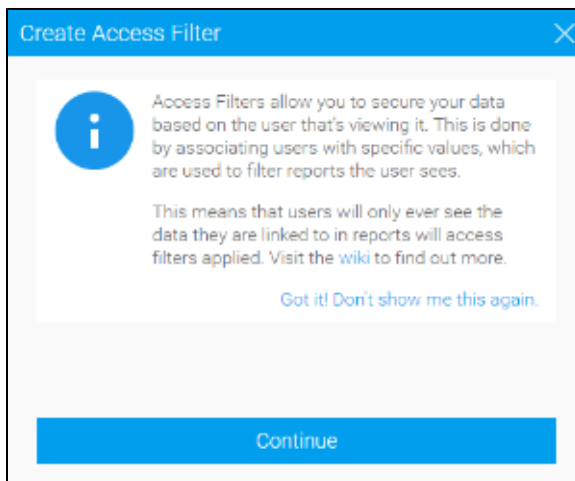


The 'Connection' details page shows various settings on the right, including 'Access Filters'. On the left, there is a sidebar with links like 'Get help!', 'Need help?', and 'Availability'. The 'Access Filters' section in the main area has a table with one entry: 'Country Filter'. An 'Add' button is visible next to the table.

If this is the first time you have created an access filter, you may be shown this message, which provides you with some information on how access filters work.

Click on the **Got it! Don't show me this again** link in order to continue and not be shown this message the next time you set up an access filter.

Click **Continue** to create an access filter and ensure you see this message next time.



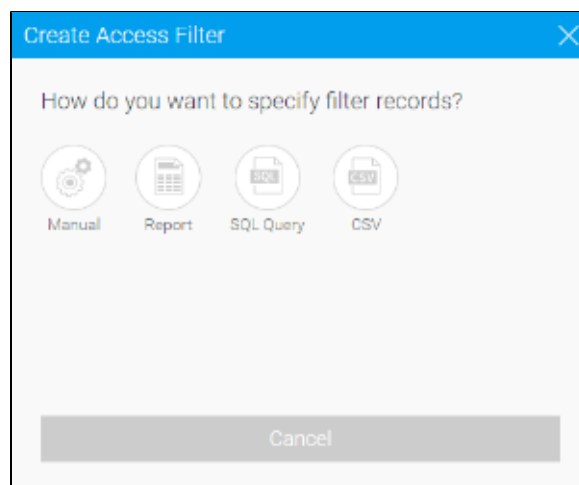
The 'Create Access Filter' dialog box features a blue header with a close button. It contains an information icon (i) and text explaining that access filters secure data based on the user viewing it. It states: 'This means that users will only ever see the data they are linked to in reports will access filters applied. Visit the wiki to find out more.' At the bottom, there is a 'Continue' button and a link that says 'Got it! Don't show me this again.'.

3. You will now need to specify which method to use when sourcing access filter records. The following options are available:

- **Manual** - this allows you to manually provide the access filter pairings, relying

on you to maintain the records manually over time. Generally this option is reserved for initial trials of access filters before moving to one of the alternative methods below.

- **Report** - this allows you to use the results of a report as the records of your access filter. You will need to have a report enabled for use in this way.
- **SQL Query** - this allows you to run an SQL query which returns the records for your access filter.
- **CSV** - this allows you to upload a CSV file to use as the records of your access filter.



Filter Parameters

Each Access Filter contains a list of one or more records matching a Yellowfin user to a Reference Id. These can be loaded into the system in three ways: manual entry, from a CSV file, or by running a scheduled query on the source database.

In each case you will need to enter records consisting of four fields (in this order):

Identifier Type	Identifier	Filter Type	Reference ID
<p>The Identifier Type and Identifier are used to identify a Yellowfin user.</p> <p>The Identifier Type can be either</p> <ul style="list-style-type: none"> ◦ "Email Address", ◦ "Yellowfin Person ID", or ◦ "User ID". <p>The user id related to the user id used within Yellowfin.</p>	<p>The Identifier field will then be the corresponding user id.</p>	<p>The Filter Type field is used to determine what type of filter this is. This is critical to assist users when creating views or reports. Select a user friendly type name.</p> <p>To add or delete Filter Types, click the Configure Reference Types button on the Connection page.</p>	<p>The Reference Id field is the corresponding data for the matching user.</p>

Manual Access Filters

[top](#)

Create Access Filter

How do you want to specify filter records?

Manual

Report

SQL Query

CSV

Continue

Settings

Complete the settings step in order to define how the access filter records will be sourced and updated.

Setting	Description
Name	Provide a name to help identify this access filter on the Connections and Task pages.
Reference Type	Provide a label to help identify this access filter's values when linking it to a field in the view. See the Configure Reference Types section for more information.
Refresh Type	You will have two refresh options: <ul style="list-style-type: none"> Append: new access filter records will be added to the current list of records. Overwrite: new access filter records will replace the current list of records.
Update Reminder	Define a schedule that creates a system task as a reminder to update these records periodically.

User

Search for the user you wish to assign a value to, selecting their name from the list.

Create Access Filter

Settings

Name

Country

Provide a name to help identify this access filter on the Connections and Task pages.

Reference Type

Country Name

Provide a label to help identify this access filter's values when linking it to a field in the View.

Create new reference type.

Refresh Type

Append

Overwrite

New Access Filter values will be added to the current list of records.

Update Reminder

Define a schedule that creates a system task as a reminder to update these records periodically.

Assignee

Monthly

Day: 1

Advanced settings

This will run every month, on the 1st day of the month.

Input Values

Create Access Filter

Settings

Input Values

Records

Usage

Jessica Flower

Mr Administrator

Sammy Jones

Teresa Pringle

Violet Southgate

People

Submit

Value

You will now be able to define the value to be associated with each user. You can only have one value per row, so if you want a user to have multiple values you will need to add their name multiple times.

Create Access Filter

Settings

Input Values

Records

Usage

Teresa Pringle

Australia

Search

Submit

Records

You will now be able to view all the records loaded into your Access Filter.

Create Access Filter

Settings

Input Values

Records

Usage

Name	Reference Type	Reference Id
Teresa Pringle	Country Name	Australia

Usage

You will be able to see a usage count to help identify how and when your Access Filter is used.

Create Access Filter

Settings

Input Values

Records

Usage

View	Field	Usage
This access filter is not currently used		

Report Access Filters

Create Access Filter

×

How do you want to specify filter records?

Manual

Report

SQL Query

CSV

Continue

Settings

Complete the settings step in order to define how the access filter records will be sourced and updated.

Setting	Description
Name	Provide a name to help identify this access filter on the Connections and Task pages.
Select a Report	Select a report that has been enabled as an access filter source.
Refresh Type	You will have two refresh options: <ul style="list-style-type: none"> • Append: new access filter records will be added to the current list of records. • Overwrite: new access filter records will replace the current list of records.
Refresh Schedule	Define whether access filter records will automatically be updated based on a schedule.

Report

In order to select a report to use for access filter records, you will have to have a report saved with this setting enabled.

Create Access Filter

×

Settings

Name

Provide a name to help identify this access filter on the Connections and Task pages.

Select a Report

Select a report that has been enabled as an access filter source.

[Create report now](#)

Refresh Type
☒ Append
☐ Overwrite

New Access Filter values will be added to the current list of records.

Refresh Schedule
☐

Don't update the access filter records based on a schedule.

Submit

Save Report

Details

Distribution Settings

Settings

Refresh

Browse Page

This report will appear on the Browse Page.

Dashboard

This report can be displayed on Dashboard Tabs.

Use as View

This report can't be used as a view for other reports.

Access Filters

The results of this report can be used as a source for access filter records.

Save As Draft

The report may look something like this:

IDENTIFIER TYPE	IDENTIFIER	REFERENCE TYPE	REFERENCE ID
EMAIL	A.Benassouy@yellowfin.b	CountryISO	AU
EMAIL	A.Abad Jose@yellowfin.b	CountryISO	AU
EMAIL	A.Sebast.Bon@yellowfin.b	CountryISO	AU
EMAIL	A.Becor Khrbach@yellowfin.b	CountryISO	AU
EMAIL	A.Horde Udoop@yellowfin.b	CountryISO	AU
EMAIL	Adby.Hughes@yellowfin.b	CountryISO	AU
EMAIL	Adas.Mohana@yellowfin.b	CountryISO	AU
EMAIL	Adgail.Cameron@yellowfin.b	CountryISO	AU
EMAIL	Adgail.Fisher.gou@yellowfin.b	CountryISO	AU
EMAIL	Achilo.Podgzzai@yellowfin.b	CountryISO	AU
EMAIL	Adam.Aalsson@yellowfin.b	CountryISO	AU
EMAIL	Adam.Beausgard@yellowfin.b	CountryISO	AU
EMAIL	Adam.Cesar@yellowfin.b	CountryISO	AU
EMAIL	Adam.Gelaty@yellowfin.b	CountryISO	AU
EMAIL	Adam.Vojtosz@yellowfin.b	CountryISO	AU
EMAIL	Adrian.Walsh@yellowfin.b	CountryISO	AU

Records

You will now be able to view all the records loaded into your Access Filter.

Create Access Filter

Settings

Records

Usage

Name

Reference Type

Reference Id

Teresa Pringle

CountryISO

AU

Usage

You will be able to see a usage count to help identify how and when your Access Filter is used.

Create Access Filter		
Settings	Records	Usage
View	Field	Usage
Ski Team	Athlete Country	0

SQL Query Access Filters

[top](#)

Create Access Filter

How do you want to specify filter records?

Manual

Report

SQL Query

CSV

Continue

Settings

Complete the settings step in order to define how the access filter records will be sourced and updated.

Setting	Description
Name	Provide a name to help identify this access filter on the Connections and Task pages.
Data Source	Select a source that will be queried to return access filter records.
New User Auto Refresh	Define whether the access filter records need to be automatically refreshed every time a new user is created.
SQL Query	Define the query used to return access filter values, in the format outlined in the Filter Parameters section.

Once the SQL has been defined, it will need to be validated. Click the **Validate** button and you will either be shown errors returned from the database, or this valid message.

Create Access Filter

Settings

Name

User Country

Provide a name to help identify this access filter on the Connections and Task pages.

Data Source

Ski Team

Select a source that will be queried to return access filter records.

New User Auto Refresh

Don't update the access filter records when a new user is created.

SELECT

'EMAIL' AS IdentifierType,

'PERSON"."FIRSTNAME" || ' ' || "PERSON"."LASTNAME" || '@yellowfin.bi' AS

Identifier,

'Country/ISO' AS ReferenceType,

'AU' AS ReferenceID

FROM "PERSON"

View Sample Output

Validate

SQL Query Valid

View Edit

New User Auto Refresh

Don't update the access filter records when a new user is created.

Here is the data returned by your query:

EMAIL	Karl.Gegenschatz@yellowfin.bi	Country/ISO	AU
EMAIL	Carlos.Liendo@yellowfin.bi	Country/ISO	AU
EMAIL	Paul.Vachoux@yellowfin.bi	Country/ISO	AU
EMAIL	Gert.Dogscha@yellowfin.bi	Country/ISO	AU
EMAIL	Kjell.Woerner@yellowfin.bi	Country/ISO	AU

Do you want to continue?

Cancel Ok

Setting	Description
Refresh Type	You will have two refresh options: <ul style="list-style-type: none"> Append: new access filter records will be added to the current list of records. Overwrite: new access filter records will replace the current list of records.
Refresh Schedule	Define whether access filter records will automatically be updated based on a schedule.

Once complete, use the **Submit** button to save your access filter and load values.

Create Access Filter

Settings

Name

User Country

Provide a name to help identify this access filter on the Connections and Task pages.

SQL Query Valid

View Edit

New User Auto Refresh

Don't update the access filter records when a new user is created.

Refresh Type

New Access Filter values will replace the current list of records.

Append ☐

Overwrite ☒

Refresh Schedule

Automatically update the access filter records based on the schedule defined below.

Daily

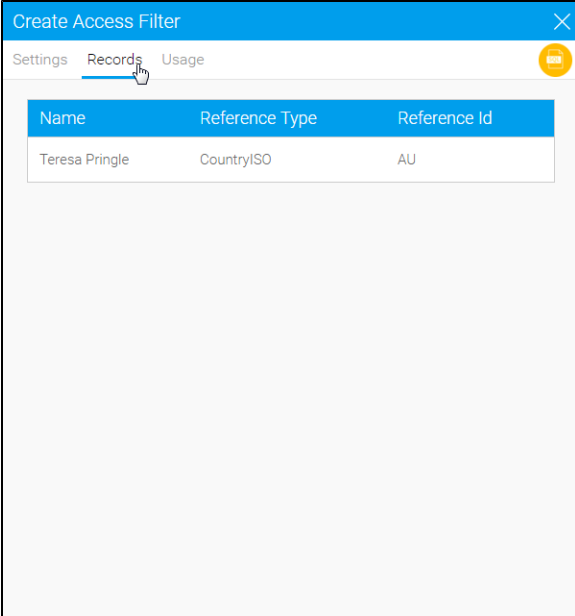
This will run daily.

Advanced settings

Submit

Records

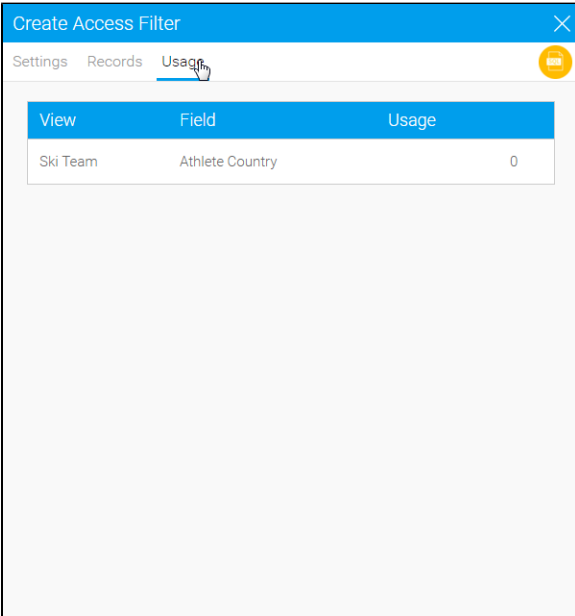
You will now be able to view all the records loaded into your Access Filter.



Create Access Filter		
Settings	Records	Usage
Name	Reference Type	Reference Id
Teresa Pringle	CountryISO	AU

Usage

You will be able to see a usage count to help identify how and when your Access Filter is used.



Create Access Filter		
Settings	Records	Usage
View	Field	Usage
Ski Team	Athlete Country	0

CSV Access Filters

[top](#)

The file must consist of records of the four fields listed above. The file may contain a header row, which must have the titles "Identifier Type", "Identifier", "Reference Type" and "Reference Id".

Create Access Filter

How do you want to specify filter records?

Manual

Report

SQL Query

CSV

Continue

Settings

Complete the settings in order to define how the access filter records will be sourced and updated.

Setting	Description
Name	Provide a name to help identify this access filter on the Connections and Task pages.
File	Upload a csv file to provide values for the access filter records, in the format outlined in the Filter Parameters section
Refresh Type	You will have two refresh options: <ul style="list-style-type: none"> Append: new access filter records will be added to the current list of records. Overwrite: new access filter records will replace the current list of records.
Update Reminder	Define a schedule that creates a system task as a reminder to update these records periodically.

Create Access Filter

Settings

Name

Country Values

Provide a name to help identify this access filter on the Connections and Task pages.

File Uploaded Successfully

accessfilter.csv

Replace

Refresh Type

Append

Overwrite

Update Reminder

Define a schedule that creates a system task as a reminder to update these records periodically.

Submit

Records

You will now be able to view all the records loaded into your Access Filter.

Create Access Filter		
Settings	Records	Usage
Name	Reference Type	Reference Id
Teresa Pringle	CountryISO	AU

Usage

You will be able to see a usage count to help identify how and when your Access Filter is used.

Create Access Filter		
Settings	Records	Usage
View	Field	Usage
Ski Team	Athlete Country	0

Assign to a View

[top](#)

Once you have set up one or more Access Filters on a data source, you can assign them to any views created against that source.

1. Create your view as normal, and then on the Fields page, select a field that corresponds to one of the Reference Types you have created.
2. On the Access tab, select the correct type from the Access Filter selection. You will not be able to select Reference Types that don't have any filter records saved against them.
3. Once you have selected the Access Filter, save the field. You can select more than one field to be different Access Filter types if you wish.
4. Once you have finished assigning access filter types to the fields on the view, go to the View Security page. You can select a default filter to be applied to reports created against this view here, or choose not to have one. If you select a default filter, any subsequent report created against this view will have the filter applied. Users creating reports that have the appropriate access level can change or remove the filter on a per-report basis.

Assign to a Report

[top](#)

When creating a report using the Drag and Drop Builder, an Access Filter can be applied if the selected View has had Access Filters defined.

On the Report Data page, open the Report Data section in the Report Options box on the right hand side. The Access Filter selection box contains any filters that have been attached to the selected view.

If you select a filter, it will be applied to the results for each user when they run the report.

Note: The only users with the appropriate security access level will be able to change the Access Filter on a report.

Note: You cannot take a screenshot of reports that have access filters assigned to them.

[top](#)

Overriding Access Filters

You can set it up so that certain users, such as administrators, are able to override access filters to view all results. This is done by defining an overriding code, which can then be added to a specific user's source filter entry. Yellowfin will then not apply the access filter for such users, providing them with the full results.

Note that this type of setup to switch the access filters on or off can only be done by administrative users. The users for whom this is applied, will not be able to choose whether or not to apply the access filters themselves.

Enabling the overriding functionality

Before you can use a code to override the access filters, you will need to enable this functionality. This is done by adding the following SQL query into the configuration table in your database:

```
INSERT INTO Configuration VALUES (1, 'SYSTEM', 'SOURCEFILTERWILDCARD', '%');
```

In the above example, '1' signifies the primary organization ID, and '%' the override code. You can specify this code value with any character or sequence of characters to define a code. For example, 'no_filters'.

Note: After adding this query, restart your Yellowfin instance to enable this functionality.

[top](#)