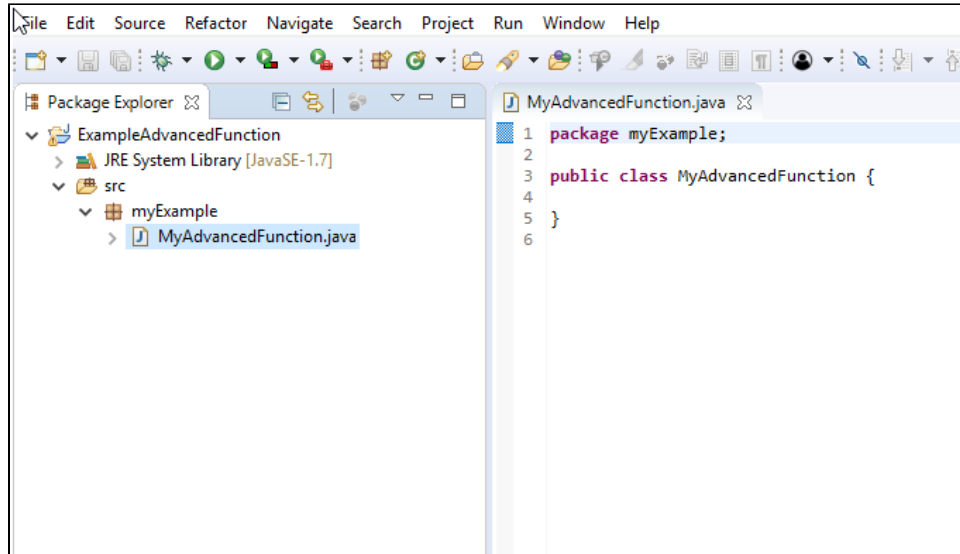


Advanced Function Basics

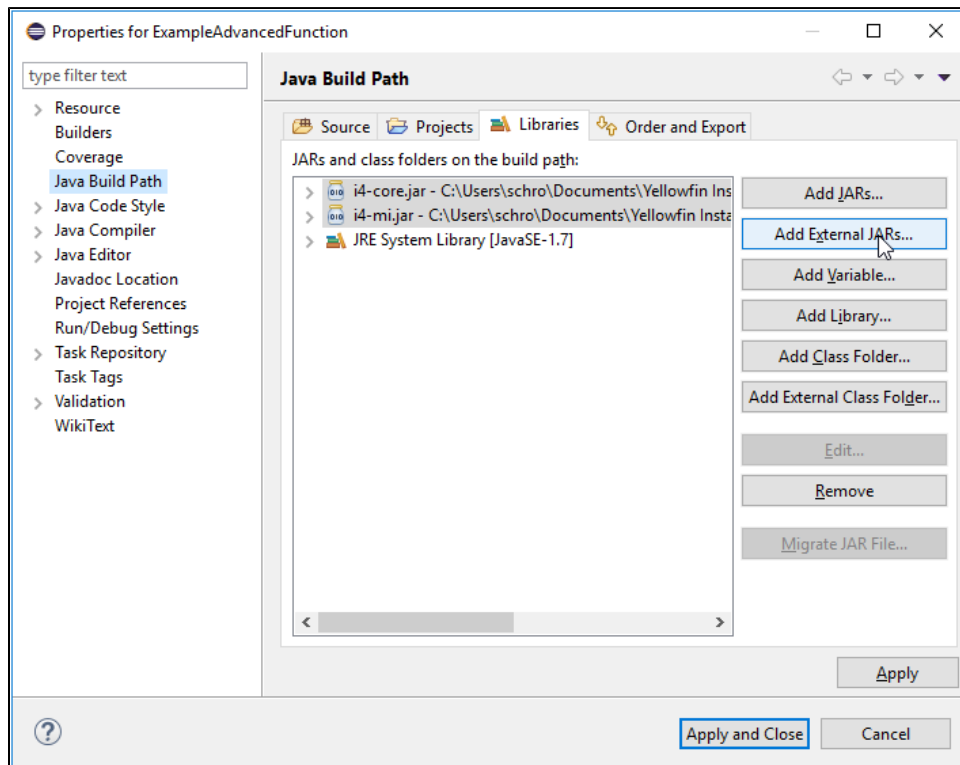
This section depicts a basic process of how an advanced function is created to be used in a Yellowfin report.

Note: Our example uses Eclipse to create an advanced function.

1. Create a new Java project and class.



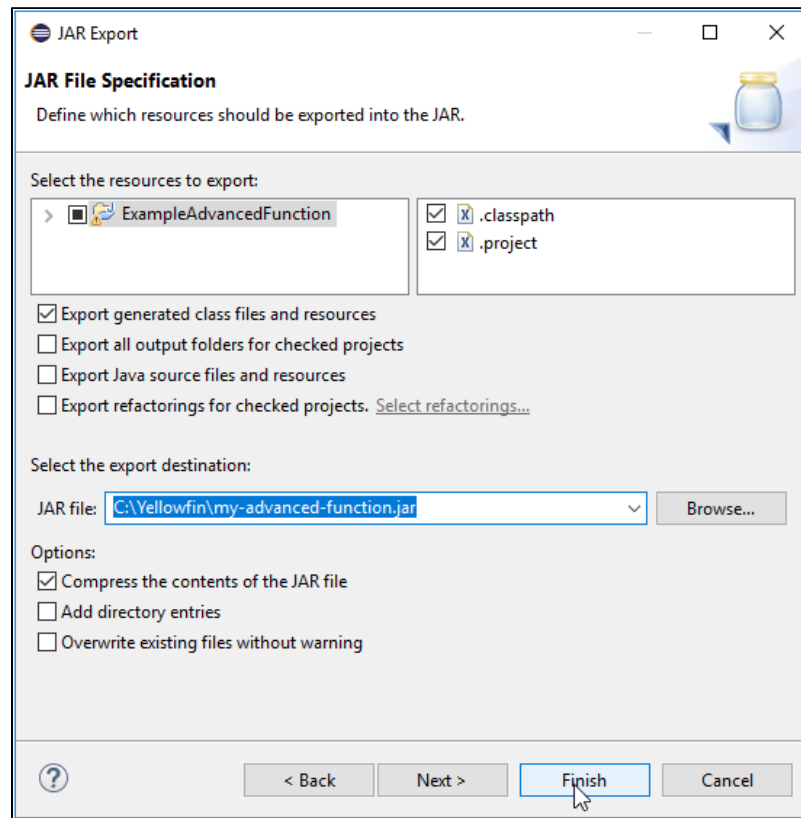
2. Add the required jar files to your build path. In order to compile an advanced function, you will need to include **i4-core.jar** and **i4-mi.jar** files into the build path. These can be found in your `<YellowfinDirectory>\appserver\webapps\ROOT\WEB-INF\lib\` folder.



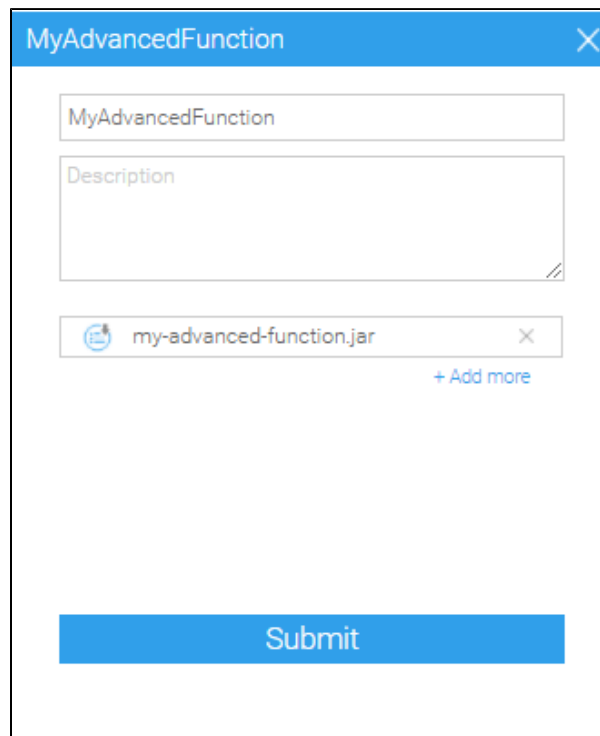
3. Set your class to extend `AnalyticalFunction` and add the unimplemented methods.

[blocked URL](#)

4. Code your advanced function. See example of a basic accumulative total advanced function.
5. Compile this into a jar file. For compatibility purposes, we recommend that you compile this with Java 7 JDK. If your function uses dependent libraries, you will need to place all of the jar files into a single folder, compress it into a .zip format, and then change the extension of that file to .yfp.



6. Load your advanced function through Yellowfin's plug-in manager.



7. Once the advanced function has loaded, it will be immediately available for use in a report.

The screenshot shows a software interface titled "Advanced Metrics". It has two tabs: "Advanced Function" (which is active) and "Data Conversion". In the top right corner, there are "Save" and "Cancel" buttons. The main area contains the following elements:

- A label "Invoiced Amount (Numeric)" followed by a set of mathematical operators: Σ , #, #!, +, %, -, and a red circle with a diagonal line.
- A "Display only in charts" toggle switch, which is currently turned off.
- A "Select Function:" dropdown menu with "Analysis" selected. Below it, a list of functions is displayed: "Grouped Percentage of Total", "Multiplication of Columns", "My Advanced Function" (highlighted in blue), "Natural Logarithm", "Null To Zero", and "Percentage Against Absolute Max".
- A large, empty rectangular box on the right labeled "My Advanced Function".

Previous topic: [Overview](#)

Next topic: [Advanced function creation](#)