

Third-Party Connectors

- [Overview](#)
 - [Connector Information](#)
- [Loading Connectors](#)
- [Using Connectors](#)

Overview

[top](#)

Yellowfin now has an open connector framework, which enables users to connect to third-party web applications. Some connectors are available through the [Yellowfin Marketplace](#), while others can be developed by third-parties.

Connector Information

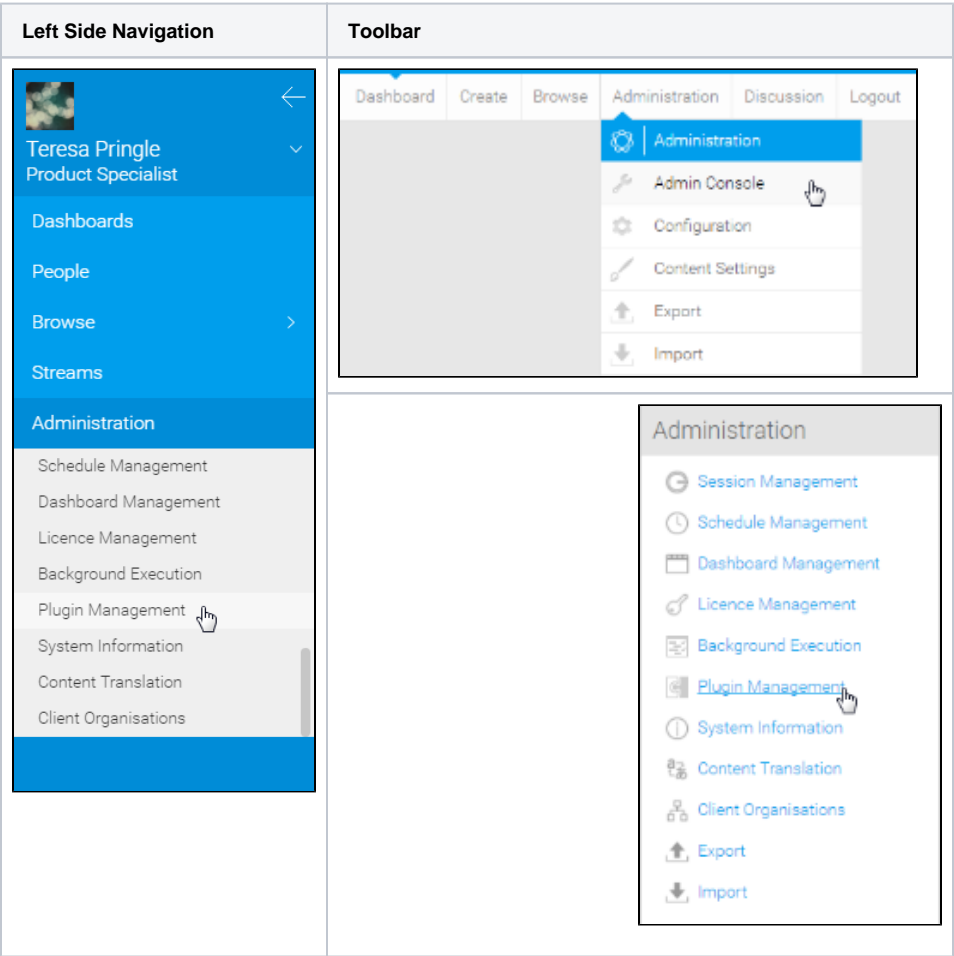
Connectors come in the form of a `.jar` or `.yfp` package, which contains all the files required to create and use the connector. Connectors can be packaged on their own, or with pre-built sample content. Sample content may include Views, Reports, and Dashboards.

Loading Connectors

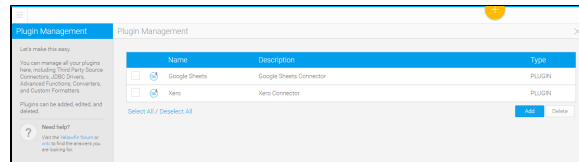
[top](#)

1. To begin, you will need to navigate to the [Plugin Management](#) page in the [Admin Console](#). You can do this by;

- Navigating directly to the [Plugin Management](#) page through the **Left Side Navigation** panel, or
- Navigating to the [Admin Console](#) and then selecting the [Plugin Management](#) page from the **Admin** list on the right.



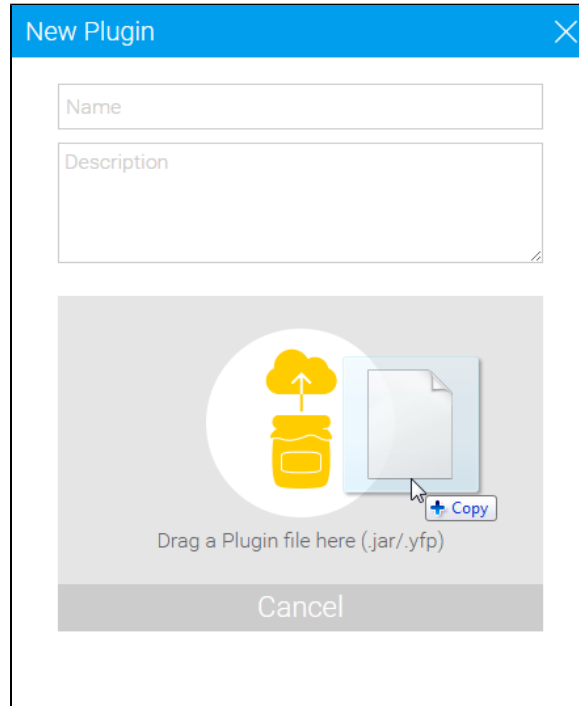
You will now be on the [Plugin Management](#) page.



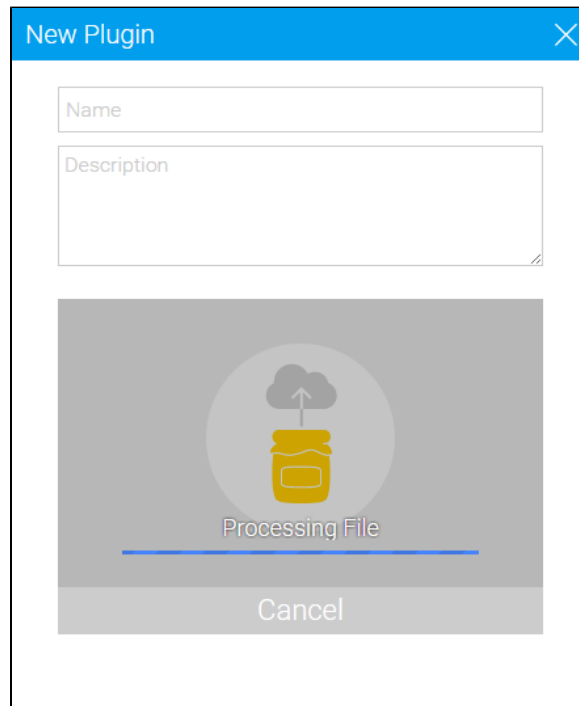
2. From here, you will need to click the **Add** button in order to start loading a new connector.



3. Drag & drop your connector onto the New Plugin window, or click on the icon to open browse in order to locate it.



4. Your connector will now be processed - the time this takes will vary depending on the size of the connector pack.



5. You now need to complete the connector by providing a **name** and **description**. This will help users understand what the plugin should be used for.

6. Click **Submit** to load your connector.

New Plugin

json.jar

x

jackson-core-2.1.3.jar

x

google-api-client-1.19.0.jar

x

google-api-services-analytics-v3-rev98-1

x

google-oauth-client-java6-1.19.0.jar

x

google-oauth-client-1.19.0.jar

x

Submit

You will now see your new connector in the plugins list.

	Name	Description	Type
<input type="checkbox"/>	Google Sheets	Google Sheets Connector	PLUGIN
<input type="checkbox"/>	Xero	Xero Connector	PLUGIN
<input checked="" type="checkbox"/>	Google Analytics	Google Analytics Third Party Connector	PLUGIN

See [Plugin Management](#) for more information on different types of plugins.

Using Connectors

[top](#)

In order to use your new connector you will need to create a new data source in Yellowfin. Each connector has its own requirements for use, so click on the connector you wish to use to find out what it requires.

Some generic instructions can be found below.

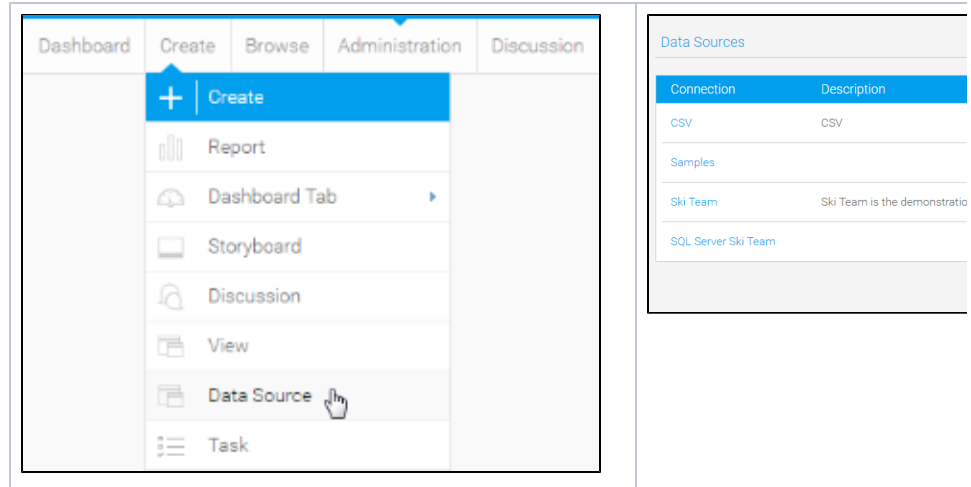
1. Create a new [Data Source](#) by using one of these methods:

- **Left Side Nav** - open the left side navigation panel, click on Create, select the Data Source option
- **Top Right Button** - click on the create button, select the Data Source option.
- **Toolbar** - click on the Create link in the toolbar, select the Data Source option.
- **Admin Console** - navigate to the Admin

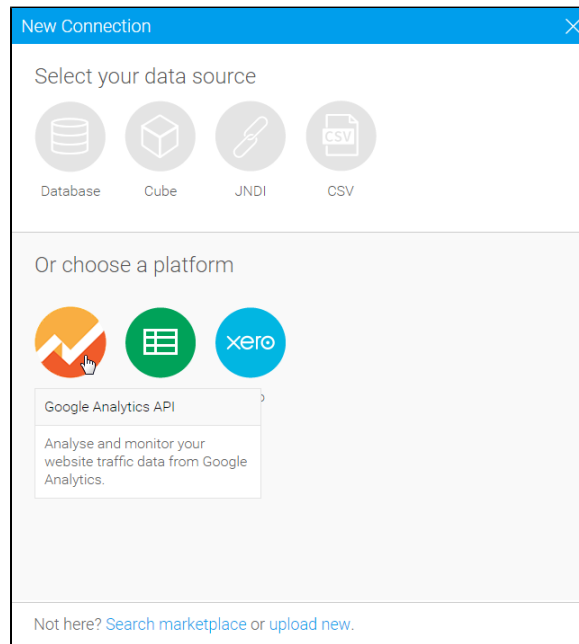
Left Side Navigation	Top Right (with Left Side Nav en:
Toolbar	Admin Console

Console, open the Data Sources section, click on the Add button.

You will now see the New Connection lightbox.



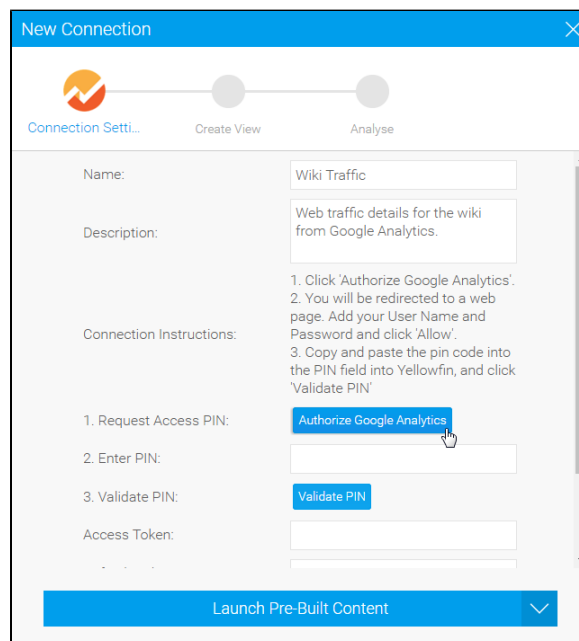
2. Select the **connector** you wish to use to set up your data source.



3. Fill in the details required by the connector. In this example, you will need to complete the **Name** and **Description**.

This should describe the specific connection, rather than the connector, as you can use the connector multiple times.

4. Complete the **Connection Instructions**. Each connector will have different requirements that will need to be completed in order to successfully access your data. In this example you will need to **Authorise Google Analytics**.



5. Once you have followed the connection instructions you will be able to complete the connection. From here you have a range of options available to you:

- **Advanced Connection Editor** - this will take you to the Data Source page in the Admin Console and allow you to edit all the advanced options available for your data source.
- **Test Connection** - this will allow Yellowfin to test the connection parameters you provided to ensure it can connect to your data source.
- **Create View** - this will allow you to create a View based on the connection.
- **Launch Pre-Built Content (optional)** - this will allow you to install any pre-built content that may come with the connector.
- **Save & Close** - this will allow you to save your connection and close the New Connection lightbox, returning you to the page you were on previously.
- **Cancel** - this closes the New Connection lightbox without saving your connection, returning you to the page you were on previously.

New Connection

Connection Setti... Create View Analyse

Connection Instructions:

1. Click 'Authorize Google Analytics'.
2. You will be redirected to a web page. Add your User Name and Password and click 'Allow'.
3. Copy and paste the pin code into the PIN field into Yellowfin, and click 'Validate PIN'

1. Request Access PIN: **Authorize Google Analytics**

2. Enter PIN: 4/7uOpuu1MOfjE6aT_gCgDIHu9e

3. Validate PIN: **Validate PIN**

Access Token:

Refresh Token:

Website: Yellowfin

Profile ID: 64945737

Advanced Connection Editor
Test Connection
Create View
Launch Pre-Built Content
Save & Close
Cancel

Launch Pre-Built Content

Your connection is now complete.

[top](#)