

Present Action Buttons

- [Overview](#)
 - [Action Button events](#)
- [How to use Action Buttons](#)
 - [Action Button properties](#)

Overview

Allows you to add Action Buttons to your presentation that trigger internal or external events, push and pull data (to and from enterprise apps), or perform custom workflows when clicked on. For example, you can add a button to push a lead record into Salesforce.

This widget offers multiple designs of action buttons to be used, but you can further customize or edit the look-and-feel using the properties panel for Action Buttons. Developers can also add custom code for an action button via Code Mode, allowing them to integrate seamless workflows on their presentations.

Note: to see these in action, you will need to preview the presentation.

Action Button events

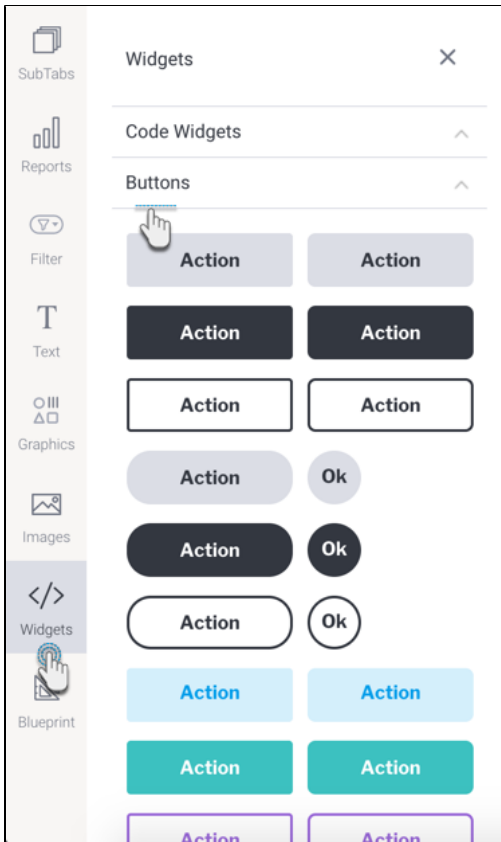
Yellowfin offers a range of out-of-the-box actions that can be assigned to a button. These include:

- **Next sub tab:** This functionality navigates the user to the next tab within the same presentation.
- **Previous sub tab:** This functionality navigates the user to the previous tab within the same presentation.
- **Reset filters:** This function allows users to clear filter selections, or in case default values are set, then reset filters to their default values.
- **Reset presentation:** This function refreshes the presentation by clearing any user interactivity performed on it, as well as removing all applied filters.
- **Go to report:** This function navigates users to a specified report. This report can be specified by providing its report UUID.
- **Go to sub tab:** Navigates to any sub tab in the same dashboard, where the sub tab is specified by its order number. For example to jump to the forth sub tab, enter 4 in the sub tab # field.
- **Go to URL:** Navigates to an external link or page using the specified URL. You can also choose to open the new link in a new tab or window or in the current window.

Scroll down to the Action Button properties table for more information on these.

How to use Action Buttons

1. Click on the **Widgets** button on the left.
2. In the list that appear, expand the **Buttons** section. A selection of pre-designed buttons will appear.



3. Drag any design you prefer (you can further customize it) onto your slide.
4. Then in the button's property panel, expand the **Actions** section, and select a click event for this button. Yellowfin offers multiple types of events a button could trigger upon click, however users may also define a custom event via Code Mode.
5. Provide any additional information if your selected event requires it. For example, enter the UUID of the report to navigate to, if the Go To Report action is selected.

Actions

Click Event

Go to Report

Report ID

4460df58-05c6-4884

6. To change the text that appears on the button, expand the **Button Text** section, and update the text. Ensure this reflects the action you want your users to perform.

Button Text

Button Text

See report

7. You may also further customize the button, including rendering a different style for when a user hovers over the button. See the section on button properties for a description on all customization properties.
8. To test your button's functionality, enter the Preview mode and use the action button on it.

Action Button properties

Button Widget Properties



Name

Action

Size & Location



X

270

Y

124

Width

120

Height

36

Corners



0

Rotation

0

Aspect Ratio



Lock Widget



Actions



Click Event

None



Button Text



Button Text

Action

Text Alignment



Active

Hover

Opacity



100

Font

Default



14

Color



Style

Fill



Color



Border

Width

2px

Color

Style

Solid

Shadow

Spread X

0

Spread Y

0

Shadow Blur

0

Shadow Color

Property name	Description
Name	This allows you to update the name of this button widget. Note that this is not the text that appears on the button itself.
Size & Location	
X	Specify the x coordinates of the top left corner of the button widget, in order to position it exactly on your presentation slide.
Y	Specify the y coordinates of the top left corner of the button widget, in order to position it exactly on your presentation slide.
Width	Specify the width of the button widget, in pixels, in order to resize it exactly. Note that the button size will expand if the text on it exceeds the size specified here.
Height	Specify the height of the button widget, in pixels, in order to resize it exactly. Note that the size of circular buttons will expand if the text on it exceeds the size specified here.
Corners	This option allows you to define the roundness of the selected button corners. Tip: For maximum circular edges, enter half the value of the button height. For example, if the height is 130 pixels, then set the edge value to 65 pixels. Moreover, an edge value greater than 65, will have no further effect in this example.
Rotation	Specify the amount to rotate the selected button widget, in degrees. Positive degrees rotate the widget in a clockwise motion, and negative values in anti-clockwise motion.
Aspect ratio	Enable this toggle to maintain the aspect ratio. This means when increasing or decreasing the button's size, it maintains its shape (i.e. the relationship between its width and height). If this is disabled, the button can be stretched out of shape either vertically or horizontally.
Lock widget	Enable this toggle to lock the button at its location. This stops you from moving or resizing it. This holds true even when selecting multiple widgets on the slide. Note that a locked button can still be customized.
Actions	

Click Event	<p>Select an event that will trigger when the selected widget is clicked. Event options include:</p> <ul style="list-style-type: none"> • None: Use this if you do not wish the widget to trigger an event. • Next sub tab: Navigates the user to the next tab within the same presentation. • Previous sub tab: Navigates the user to the previous tab within the same presentation. • Reset filters: Allows users to clear filter selections, or in case default values are set, then reset filters to their default values. • Reset presentation: Refreshes the presentation by clearing any user interactivity performed on it, as well as removing all applied filters. • Go to report: Navigates users to a specified report. This report can be specified by providing its report UUID. • Go to sub tab: Navigates to any sub tab in the same presentation, where the sub tab is specified by its order number. For example to jump to the forth sub tab, enter 4 in the sub tab # field. Note that the sub tab order starts from number 1. • Go to URL: Navigates to an external link or page using the specified URL. You can also choose to open the new link in a new tab or window or in the current window. (See the below URL and Target settings for more information.)
Report ID	If navigating to a report using the 'Go to report' click event, provide the UUID of the report.
Sub Tab #	If navigating to a sub tab using the 'Go to sub tab' click event, enter the order number of the sub tab.
URL	If navigating to an external page using the 'Go to URL' click event, provide the full URL of the page.
Target	<p>If navigating to an external page using the 'Go to URL' click event, specify the page target. Options include:</p> <ul style="list-style-type: none"> • New Tab/Window: Opens the URL page in a new tab or window, depending on your browser's settings. Note: The default for most browsers is a window, however users can use computer shortcuts (Ctrl in Windows, and Cmd in Mac) to open in a new tab instead. • Current Window: Open the page in the current window. • Parent Frame: If Yellowfin is embedded as an iFrame, the new page will open (that is, its contents will appear) in the parent frame. Note that the parent frame is the one within which the Yellowfin frame is embedded. • Current Frame: If Yellowfin is embedded as an iFrame, the contents of the URL page will open in the current frame. Note that the current frame is the one which embeds Yellowfin.
Button Text	
Button text	Allows you to provide text that will be displayed on the button. This ideally references what function the button performs.
Text alignment	Allows you to align the button text within the button. You can opt to align it to the left, or right, or centrally.
Active - Hover toggle	<p>This toggle allows you to specify the state of the button. Toggling it to Active refers to the general state that the button will be in (i.e. when not being hovered or clicked on); whereas Hover species the button's state when the cursor hovers it.</p> <p>The chosen state affects some of the remaining button properties, so you can style the button differently for the different states.</p>
Opacity	Allows you to specify the transparency of the button in the currently selected state.
Font	Allows you to specify the font type and size of the button. (Consistent for both the states).
Text color /Color	Allows you to select a color for the button text in the currently selected state.
Style	Allows you to apply a formatting style, such as bold, italic or underline, to the button text. (Consistent for both the states.)
Fill	
Color	Allows you to specify the color to fill the button for the currently selected state.
Border	
Width	Allows you to specify a width for the button's border. If you do not prefer a border, set the slider to 0. (consistent for both the states).
Color	Allows you to specify a color for the button border for the currently selected state.
Style	Allows you to specify a border style to be applied to the button for the selected state.
Shadow	
Spread X	Allows you to cast a horizontal shadow on the button by defining its size in pixels.
Spread Y	Allows you to cast a vertical shadow on the button by defining its size in pixels.
Shadow blur	Allows you to define the sharpness of the button shadow. The smaller the value, the sharper and more defined the shadow will be. For a blurry or softer shadow, provide a bigger value.
Shadow color	Allows you to set a color for the shadow. This <i>must</i> be specified to make the shadow visible.