

Scatter Chart

- [Overview](#)
 - [Chart Data Options](#)
- [Scatter Chart Tutorial](#)
 - [Summary](#)
 - [Tutorial](#)

Overview

[top](#)

Can be used with categorical, sequential or time-series data. Bubble size and location combine to effectively display 3-D data on a 2-D chart.

Chart Data Options

Option	Description
Horizontal Axis	Select the metric or date to use as the x axis measurement.
Vertical Axis	Select the metric or date to use as the y axis measurement.
Size	Optional: Select a metric to set the size of each bubble.
Colour	Optional: You can select one field to split your values by colour.

Scatter Chart Tutorial

[top](#)

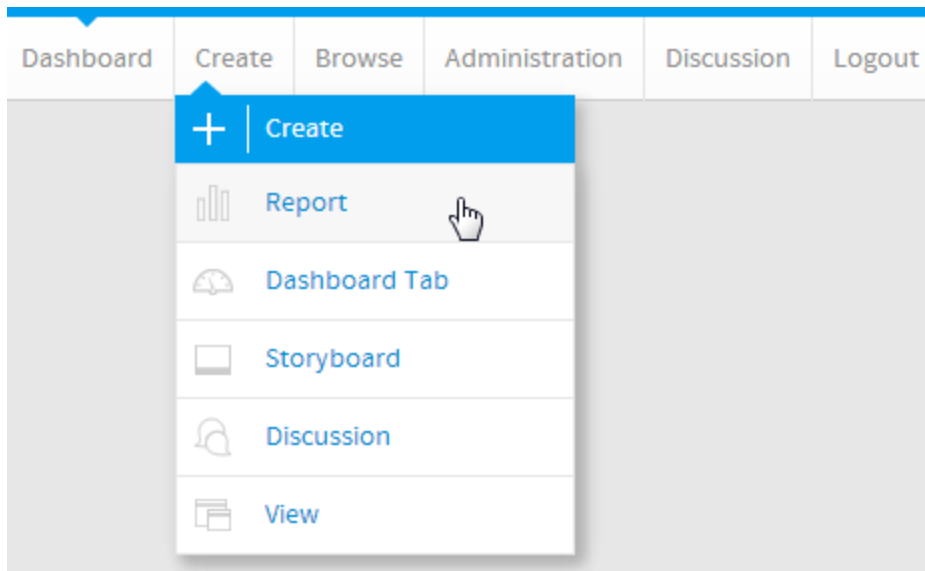
Summary

In order to set up a Scatter Chart you will need:

1. Create a report with chart display
 - a. Select a field to use as the **Horizontal Axis**
 - b. Select a field to use as the **Vertical Axis**
 - c. Select a field to use as the **Size** (optional field)
 - d. Select a field to use as the **Colour** (optional field)
2. Create your chart, selecting **Scatter** as the type under the **Analytical** heading
3. Provide the **Horizontal Axis**, **Vertical Axis**, **Size**, and **Colour** options
4. Customise the Chart as required
5. Proceed to the **Output** step
6. **Save** your report

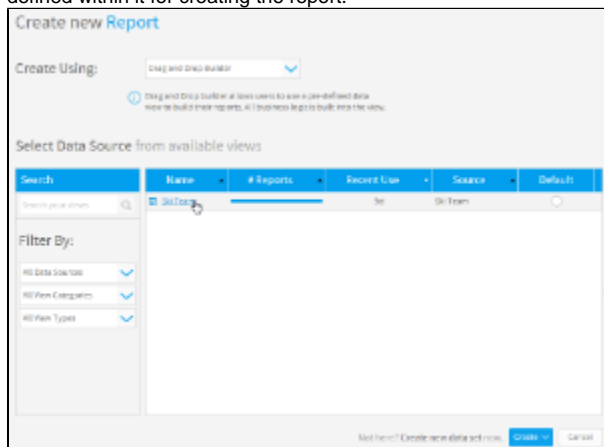
Tutorial

1. Click the **Create** link in the main navigation bar of the system, and select the **Report** option.



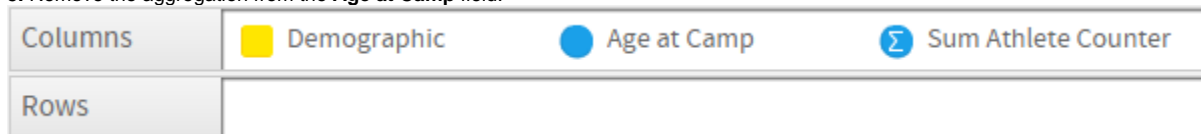
2. You will now be on the Report Initialisation page. Ensure the **Drag and Drop Builder** has been selected to use for report creation.

3. Click on the **Ski Team** view in order to use the fields defined within it for creating the report.

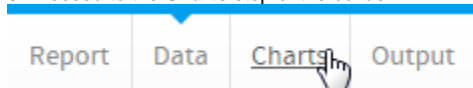


4. Add **Age at Camp**, **Demographic**, and **Athlete Counter** to **Columns**.

5. Remove the aggregation from the **Age at Camp** field.



6. Proceed to the **Charts** step of the builder.




7. Select the **Scatter** chart from the **Analytical** section of the charts panel on the right of the screen.



8. Set the following components:

- **Horizontal Axis:** Age at Camp
- **Vertical Axis:** Sum Athlete Counter
- **Colour:** Demographic


Scatter

Horizontal Axis
☐

● Age at Camp

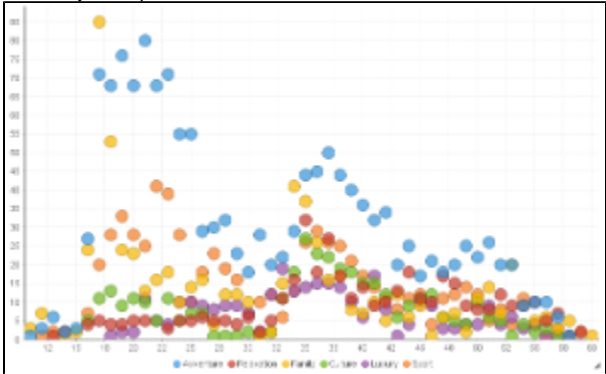
Vertical Axis
☐

Σ Sum Athlete Counter

Colour
● ● ●

■ Demographic

9. Save your report



[top](#)